
EOC Data User Services

Shigemitsu FUKUI

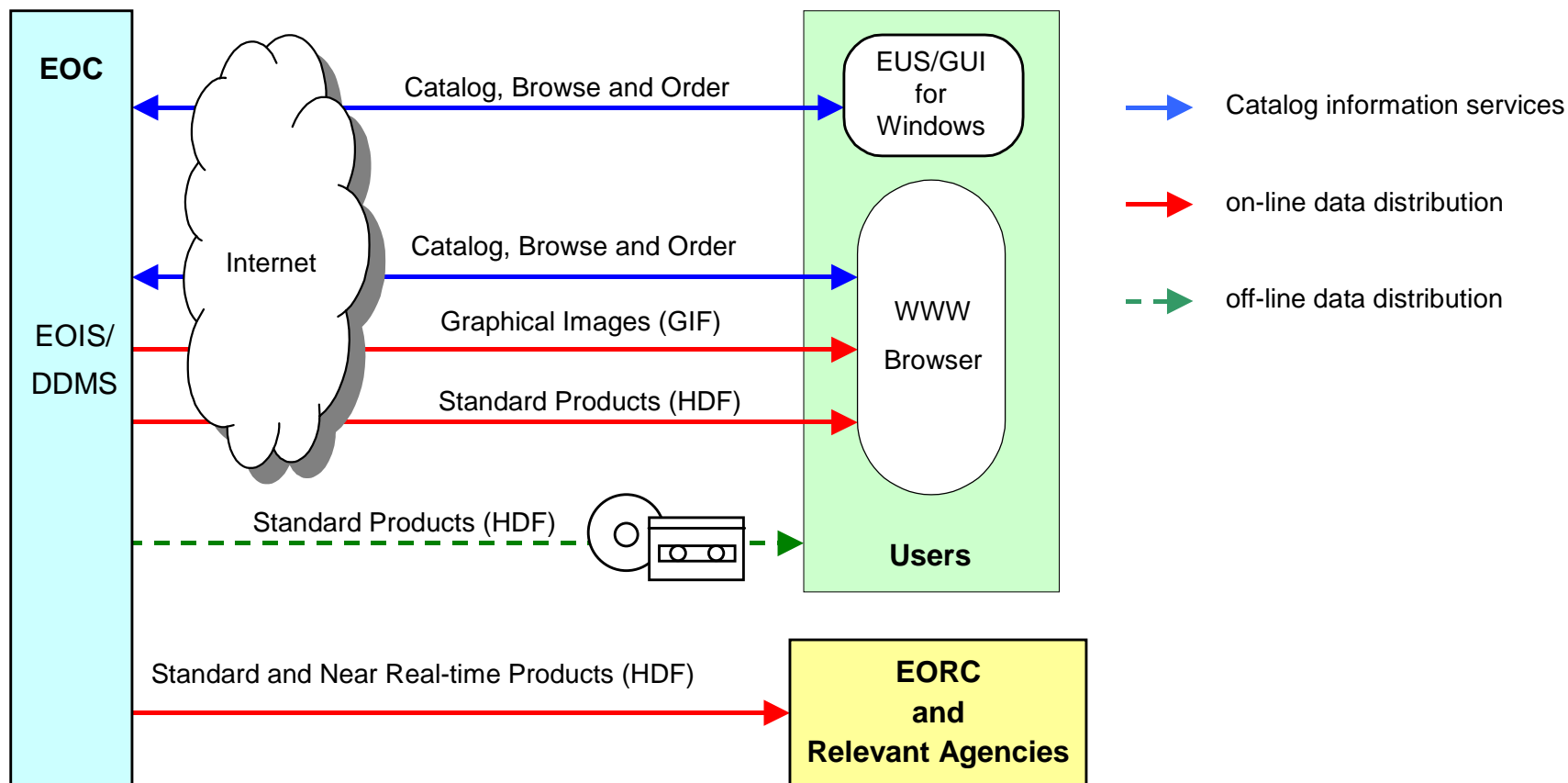
Earth Observation Center (EOC) / NASDA

November 14, 2001

EOC systems for user services

- **The Earth Observation Center (EOC) receives, processes, archives and retrieves ADEOS-II earth observation data**
- **EOC user services are provided from EOIS/DDMS***
 - * **EOIS : NASDA Earth Observation data and Information System**
 - DDMS : Data Distribution and Management System**
- **EOIS/DDMS is infrastructure facility to archive, manage and distribute earth observation data and information**
- **Objects of EOIS are all satellite and sensor data, and enhancements for ADEOS-II products has been finished this September**

EOIS user services overview



User services from EOIS

EOIS user services at EOC are categorized as :

1. Catalogue information services

- Catalogue search
- Browse search
- Product order

2. Off-line data distribution service (on media)

- Scene orders
- Standing orders

3. On-line data distribution service (via network)

- Graphical images (GIF data) on the WWW
- Standard products via the internet
- Data transmission to relevant agencies

Catalog information

Using the EUS*, users can access catalog information service

*** EUS : EOIS user interface software**

- **EUS/GUI**

- Application software for Windows 95 /98 /NT4.0
(Operation on Windows XP / 2000 / Me are not confirmed yet)
- For PIs and relevant agencies only (user registration is necessary)

- **EUS/WWW Gateway**

- Information service available via WWW browser software
- Catalog and browse search are available for all users
- Ordering interface is only for PIs (user registration is necessary)
- The following is URL :

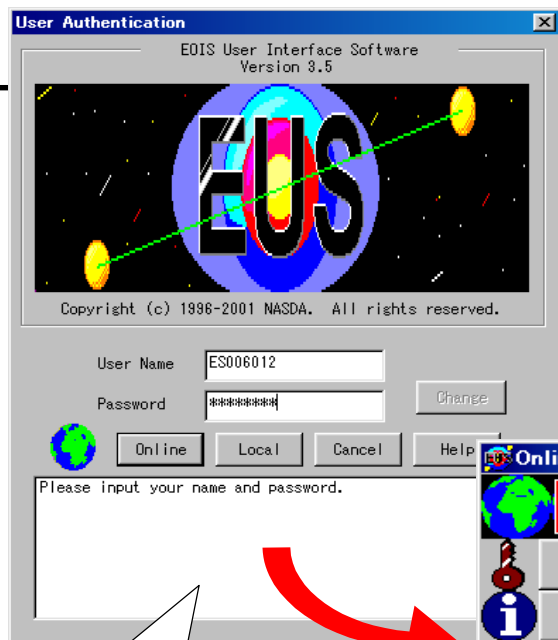
http://www.eoc.nasda.go.jp/catalogue/catalogue_e.html

Preparation for EUS

What is necessary before use the EUS?

- **Software download (EUS/GUI)**
 - EUS/GUI download is available from the following site:
 - URL : <http://www.eoc.nasda.go.jp/~eusadmin/homepage.html>
 - user name : eusadmin
 - password : dontaku
- **User registration (EUS/GUI and EUS/WWW)**
 - Contact point for PIs will be set up at EORC order desk
 - e-mail : orderdesk@eorc.nasda.go.jp
 - Tel : 813-5561-8767
 - Fax : 813-5561-9542

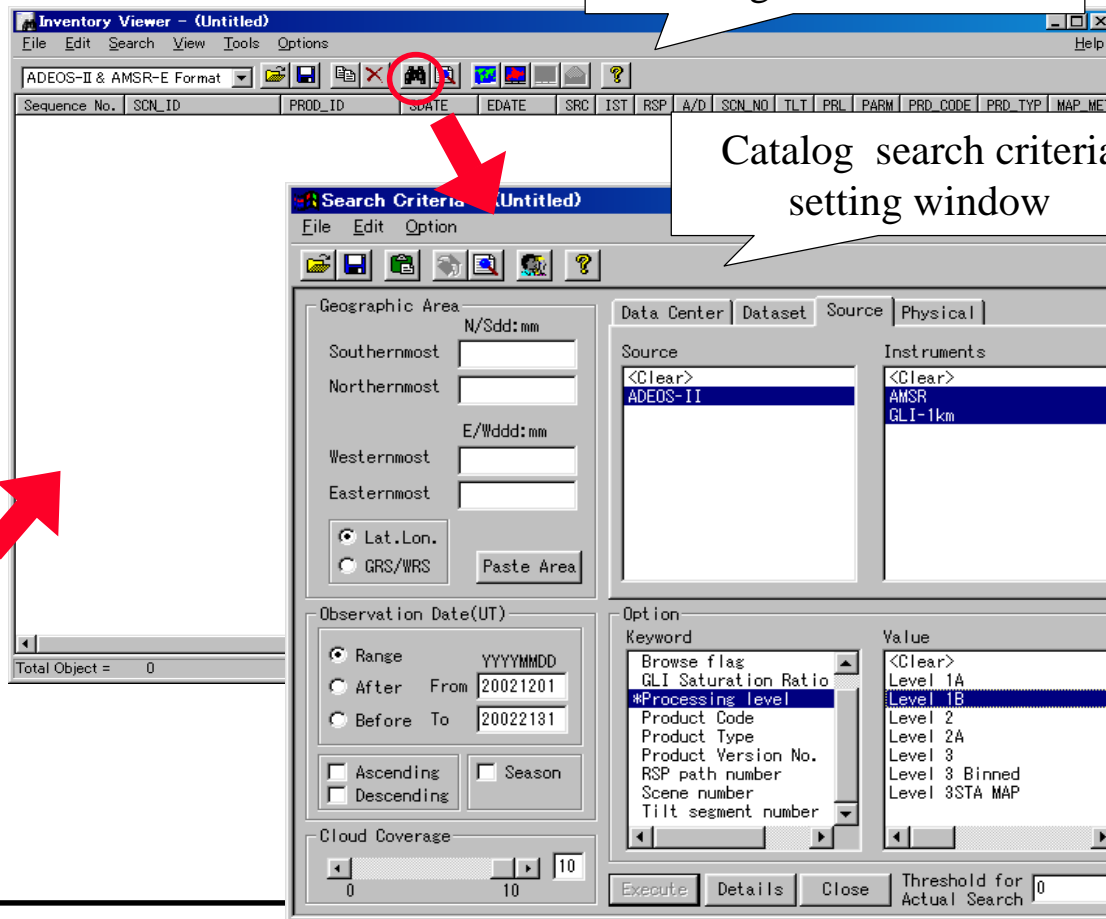
How to use EUS/GUI



Authentication window



Menu window



Catalog results viewer

Catalog search criteria setting window

Catalog and browse search by EUS/GUI

Inventory Viewer - (Untitled)

File Edit Search View Tools Options

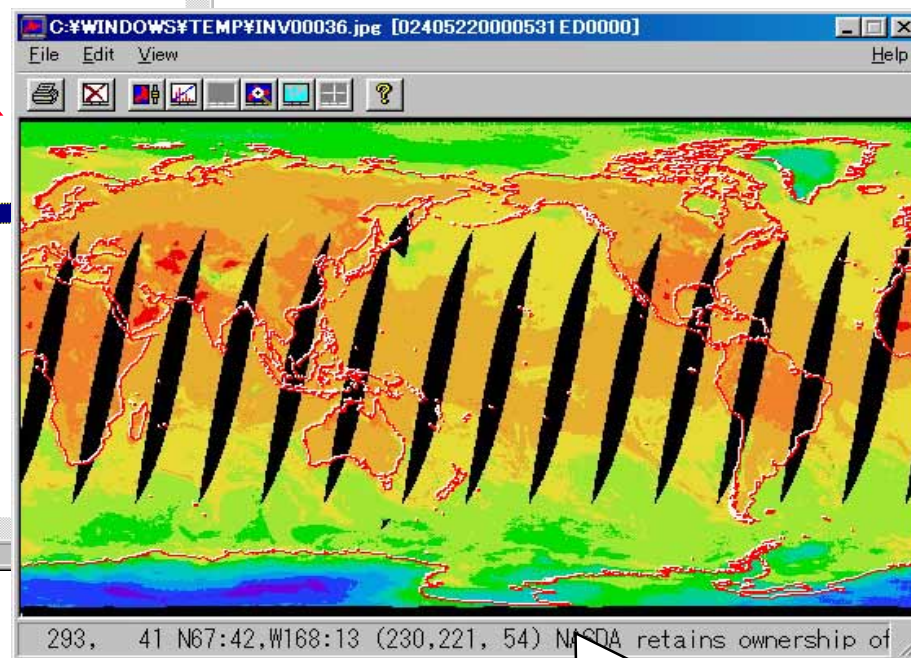
AEOS-II & AMSR-E Format

Sequence No.	SCN_ID	PRD_ID	SDATE	EDATE	SRC	IST	RSP	A/D	SCN_NO	TLT	PRL	PARM	PRD_CODE	PRD_TYP	MAP
INV00186	A2GL100050815150D1	PM1B0000000			A2	GL1	15	D	15	1	1B	MTIR			
INV00187	A2GL100050815180D1	PM1B0000000			A2	GL1	15	D	16	1	1B	MTIR			
INV00188	A2GL100050815170D1	PM1B0000000			A2	GL1	15	D	17	1	1B	MTIR			
INV00189	A2GL100050815180D1	PM1B0000000			A2	GL1	15	D	18	1	1B	MTIR			
INV00190	A2GL100050815190D1	PM1B0000000			A2	GL1	15	D	19	1	1B	MTIR			
INV00191	A2GL100050815200D1	PM1B0000000			A2	GL1	15	D	20	1	1B	MTIR			
INV00192	A2GL100050815210N1	PM1B0000000			A2	GL1	15	A	21	1	1B	MTIR			
INV00193	A2GL100050815220N1	PM1B0000000			A2	GL1	15	A	22	1	1B	MTIR			
INV00194	A2GL100050815230N1	PM1B0000000			A2	GL1	15	A	23	1	1B	MTIR			
INV00195	A2GL100050815240N1	PM1B0000000			A2	GL1	15	A	24	1	1B	MTIR			
INV00196	A2GL100050815250N1	PM1B0000000			A2	GL1	15	A	25	1	1B	MTIR			
INV00197	A2GL100050815260N1	PM1B0000000			A2	GL1	15	A	26	1	1B	MTIR			
INV00198	A2AMS00053110MD	P01B0000000	20000531	20000531	A2	AMS	10	D			1B				
INV00199	A2AMS00053108MD	P01B0000000	20000531	20000531	A2	AMS	6	D			1B				
INV00200	A2AMS00053114MD	P01B0000000	20000531	20000531	A2	AMS	14	D			1B				
INV00201	A2AMS00053002MD	P01B0000000	20000530	20000531	A2	AMS	2	D			1B				
INV00202	A2AMS00053118MD	P01B0000000	20000531	20000531	A2	AMS	18	D			1B				
INV00203	A2AMS00053118MA	P01B0000000	20000531	20000531	A2	AMS	18	A			1B				
INV00204	A2AMS00053126MD	P01B0000000	20000531	20000531	A2	AMS	26	D			1B				
INV00205	A2AMS00053130MA	P01B0000000	20000531	20000531	A2	AMS	30	A			1B				
INV00206	A2AMS00053134MA	P01B0000000	20000531	20000531	A2	AMS	34	A			1B				
INV00207	A2AMS00053142MD	P01B0000000	20000531	20000531	A2	AMS	42	D			1B				
INV00208	A2AMS00053150MD	P01B0000000	20000531	20000531	A2	AMS	50	D			1B				
INV00209	A2AMS00050402MD	P01B0000000	20000504	20000505	A2	AMS	2	D			1B				
INV00210	A2AMS00050411MA	P01B0000000	20000504	20000504	A2	AMS	11	A			1B				
INV00211	A2AMS00050419MA	P01B0000000	20000504	20000504	A2	AMS	19	A			1B				
INV00212	A2AMS00050427MA	P01B0000000	20000504	20000504	A2	AMS	27	A			1B				

Total Object = 111

Catalog search result

Product request window
(next page)



Browse data viewer
(sample of AMSR L3 SSW)

Products ordering by EUS/GUI



Product Request (To EOIS) - (Untitled)

File Edit Option Help

User Code: [] Order Request Rest/Limit Number: []

User Tel.#: []

Application Field: [Select]

Delivery Flag: [Applied Address] Desired Delivery Date [YYYYMMDD]: []

Order No.	Item No.	Sequence No.	Dataset	SceneID
		INV00186	HEOC GLI-1km Level 1B MTIR	A2GL1000
		INV00187	HEOC GLI-1km Level 1B MTIR	A2GL1000
		INV00198	HEOC AMSR Level 1B	A2AMS000

[Select Product] [Details]

Product Selection

Sequence No.	SCN_ID	PROD_ID	SDATE	EDATE	SRC	IST	RSP	A/D	SCN
INV00187	A2GL100050815160D1	PM1B0000000			A2	GL1	15	D	16

Data Parameter Patterns

☒ Data Specific Parameter [Dataset Default] [Save] [Delete]

☐ All Parameter

Major Parameter

Media: [8mm Tape] Processing Level: [2M :Mapped Data] Product Code for ADEOS-II/AMSI: [CLFLG_p:Cloud flags(Level-)]

Product List

- 8mm Cartridge Tape 2.5GB UNIX-Tar HDF
- 8mm Cartridge Tape 5GB UNIX-Tar HDF

Product Parameter Setting

Keyword	Value
<Clear>	Cubic Convolution
Map Projection Method	Nearest Neighbor
*Resampling Method	Bilinear
Direction of Map Projection	
Base Latitude	

[Paste Area]

Quantity: [1]

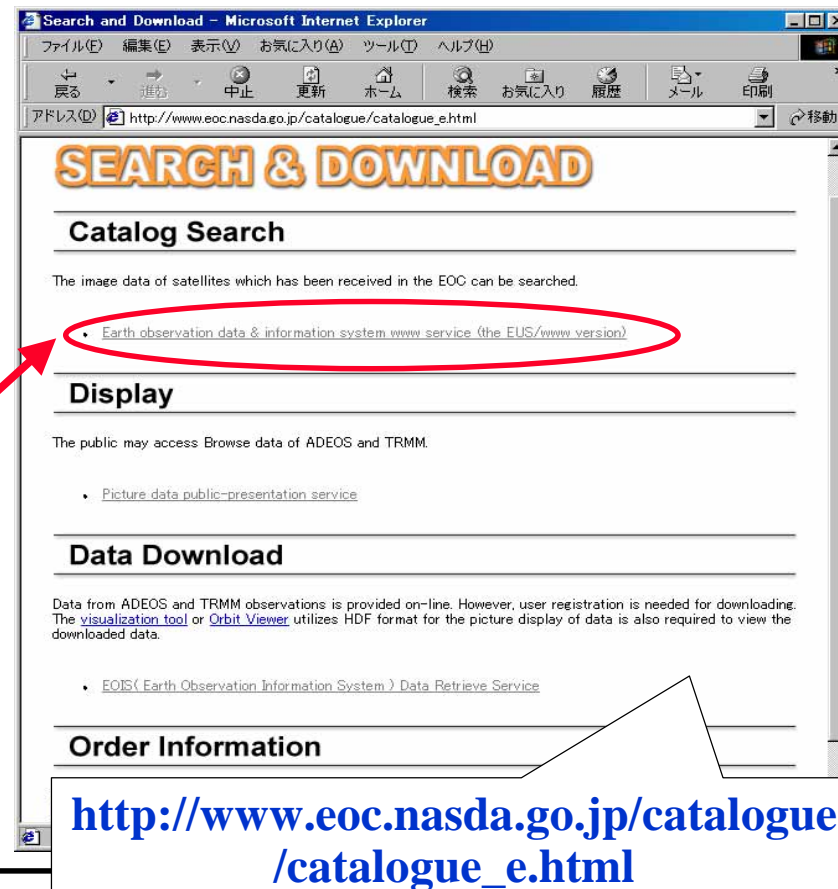
[OK] [Cancel]

Product request window

Parameter selection window

How to access the EUS/WWW

EOC Homepage > Search & Download > Catalog Search



Login for EUS/WWW

Service login

- Public users can login with
 - 1) user name “guest” and
 - 2) no password
- Registered users login with
 - 1) their own user name and
 - 2) assigned password

EOIS WWW Service Login
(Earth Observation Data and Information System)
[English / [Japanese](#)]

- Information -

- [Information about the EOIS WWW Service](#)(Nov 2,2001)
- [TRMM Data Distribution Suspension](#) (Aug 6,2001)
- [Information about the release of EOIS WWW Service\(Ver. 2.2\)](#) (Mar 8,2001)
- [LANDSAT-5 Image Anomalies](#)(Feb 15,2001)
- [Suspension of ERS-2 Catalog Release due to a Satellite Anomaly](#)(Feb 15,2001)
- [Central Government Name Changes](#) (Jan 9,2001)
- [Information about closing service of photo product etc.](#) (Oct 26,2000)

User Authentication

1) user name → User Name ES006012

2) password → Password *****

Login

Enter user name and password, and login.
If you are not a member of this service, type "guest" in User Name entry field and do not type anything in the Password entry field.
User registration is allowed for only NASDA's project members. If you are not, please log in as a guest user.

[EUS/WWW Online Help](#)

Catalog search by EUS/WWW

Service Selection

[English / Japanese]

Catalogue search and Order for data (EUS/WWW)

You can search catalogue information and browse image and order the satellite data provided by Earth Information System(EOIS) at NASDA and the similar information system(EOSDIS) at NASA.
Catalogue information retrieval and order for EOSDIS is not available yet for it is under preparation.

Start Map Version
A map applet will be displayed in a few minutes to start service.

Start No Map Version
No map applet will be displayed.
[Restrictions and known bugs.](#)
[EUS/WWW Online Help](#)

Download data which you ordered

In this service, you can download the data if you selected "on-line" as media when you ordered.
Please use this service after you received mail notification that tells you your order is ready.
In addition, please acquire the data within one month after you received the notification, or your order will be cancelled.

Start Data Download

Observation request & Observation plan

You can send observation requests and also you can search for the status of observation requests, requests and observation plans.

Start Observation Request & Observation

Menu

- Authentication
 - Login
 - Logout
 - Password
- Search & Order
 - No Map Version
 - Search
 - Search History
 - Order
 - Order History
 - Order Status
 - User Information
 - Help
- Data Download
 - Data Download
- Obs. Request & Obs. Plan
 - Obs. Request
 - Obs. Plan

Map Control

Map Projection

- ☒ World
- ☐ Northern Hemisphere
- ☐ Southern Hemisphere

Map Data

Japan(normal, 175KB)

☒ Show ID(No.)

Satellite Select ADEOS-II

Sensor Select AMSR
GLI-1km

Data set Select HEOC GLI-1km Level 1B MTIR
HEOC AMSR Level 3 SSW

The above search criteria are interdependent. Selecting any one of them can narrow other conditions.
You must select at least one among Data set, Satellite, and Sensor.
Since a large amount of results may be given when you select only Satellite, it is recommended to select Data sets and Sensors if possible.

Clear selection Clear (Data center and Data selection)
Both search destination field and data selection fields will be cleared.

Observation Date(Required)

Select date range ☐ Last one week ☐ Last one month

Year Month Day

Start 2000 05 01 Effective start date 2000/01/01

End 2000 05 31 Effective end date 2001/11/08

Options

- Processing Level
- Product Version No.
- Cloud Coverage
- Saturation Ratio
- Browse images

Catalog search criteria setting page

Catalog search result on EUS/WWW

The screenshot displays the EUS/WWW interface in Microsoft Internet Explorer. The main window shows a map of Japan with a red box highlighting a specific area. Below the map is a table of search results. A red arrow points from the 'View Information' link in the table to a separate window titled 'Detail Information'. Another red arrow points from the 'Add to Order List' link in the table to a box labeled 'Product request page (next page)'. A third red arrow points from the 'Mark on Map' link in the table to a box labeled 'Catalog search result (text format)'.

Map Control

Map Projection
☒ World
☐ Northern Hemisphere
☐ Southern Hemisphere

Map Data
 Global(normal, 81KB)
☒ Show ID(No.)
☒ Fill Map
 Recenter Options

Menu

- Authentication
 - Login
 - Logout
 - Password
- Search & Order
 - No Map Version
 - Search
 - Search History
 - Order
 - Order History
 - Order Status
 - User Information
 - Help
- Data Download
- Obs. Request&
 - Obs. Plan
 - Obs. Request&
 - Obs. Plan

HEOC GLI-1km Level 1B MTIR

No.	Mark on Map	Reserved for Order	View Image (10KB)	View Information	Dataset code	Scene ID	Source (satellite) code	Instrument (sensor) code	Observation date	Browse flag	Scene number	Tilt segment number	Orbit Direction	RSP start path number	RSP end path number	Ephemeris data type	Sun elevation	Sun azimuth	RSP start argument of latitude	RSP end argument of latitude	Geophysical Parameter	Operation mode	Band Assignment of Browse	Browse ID	Processing Date of Browse	Browse Size(compressed)	Browse Size(uncompressed)	Number of lines	Number of Pixels	Bit per pixel	GLI Saturation Ratio(Band30)	GLI Saturation Ratio(Band31)
9	Mark on Map	Reserved for Order	View Image (10KB)	View Information	HEOC GLI-1km Level 1B MTIR	A2GL100060307120D1	ADEOS-II	GLI-1km	20000603	Y	12	1	Descending	7	7	GPS	73.13	102.56	145.45	159.31	MTIR	OBD	323436	021 G2220000603071201	20010416	10	1591	828	618	8	0.00	0.00
10	Mark on Map	Reserved for Order	View Image (10KB)	View Information	HEOC GLI-1km Level 1B MTIR		ADEOS-II	GLI-1km	20000603																							
11	Mark on Map	Add to Order List	View Image (10KB)	View Information	HEOC GLI-1km Level 1B MTIR		ADEOS-II	GLI-1km	20000603																							

Detail Information

No.9

Dataset code **HEOC GLI-1km Level 1B MTIR**
 Scene ID **A2GL100060307120D1**
 Source (satellite) code **ADEOS-II**
 Instrument (sensor) code **GLI-1km**
 Observation date **20000603**
 Browse flag **Y**
 Scene number **12**
 Tilt segment number **1**
 Orbit Direction **Descending**
 RSP start path number **7**
 RSP end path number **7**
 Ephemeris data type **GPS**
 Sun elevation **73.13**
 Sun azimuth **102.56**
 RSP start argument of latitude **145.45**
 RSP end argument of latitude **159.31**
 Geophysical Parameter **MTIR**
 Operation mode **OBD**
 Band Assignment of Browse **323436**
 Browse ID **021 G2220000603071201**
 Processing Date of Browse **20010416**
 Browse Size(compressed) **10**
 Browse Size(uncompressed) **1591**
 Number of lines **828**
 Number of Pixels **618**
 Bit per pixel **8**
 GLI Saturation Ratio(Band30) **0.00**
 GLI Saturation Ratio(Band31) **0.00**

view information

mark on map

add to order list

Catalog search result (text format)

Product request page (next page)

Detail information page

Products ordering by EUS/WWW

Go to Order List

Click!

Order steps

Step1

- Media
- Processing Level
- Product Code


Step2

- Recording method to media
- Format (HDF fixed)

Step3

- Processing Parameter
(Map projection method, etc.)
- Quantity

Order list

10		20000603 02:07:52	ADEOS-II	GLI-1km	1B			D	40.724 132.642	G
HEOC GLI-1km Level 1B MTIR										
A2GL10006030711OD1 PM1E0000000										

Step 1 Product type

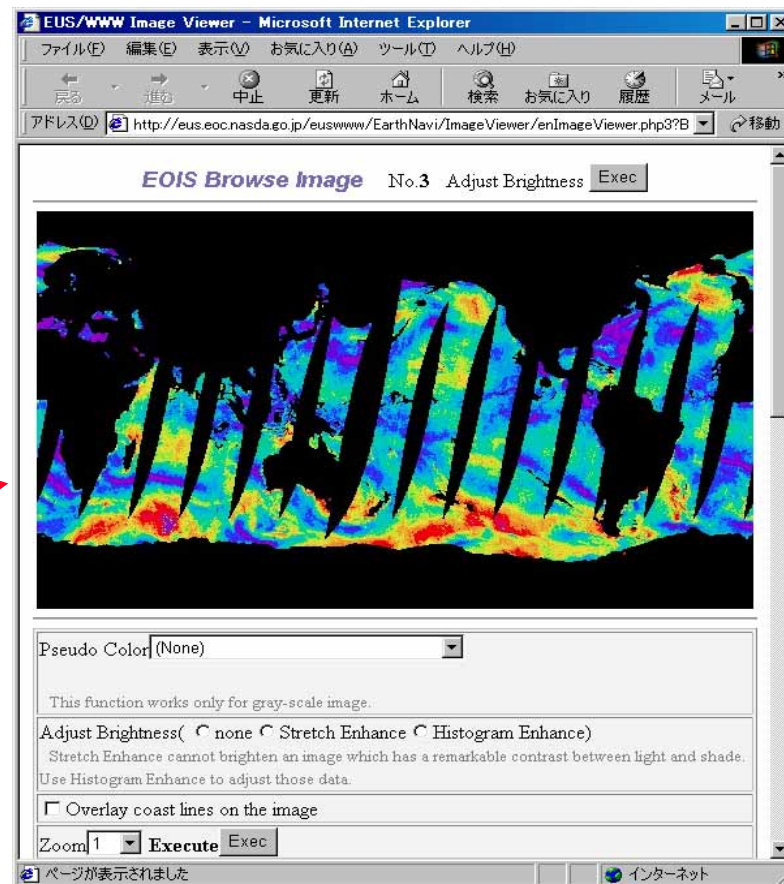
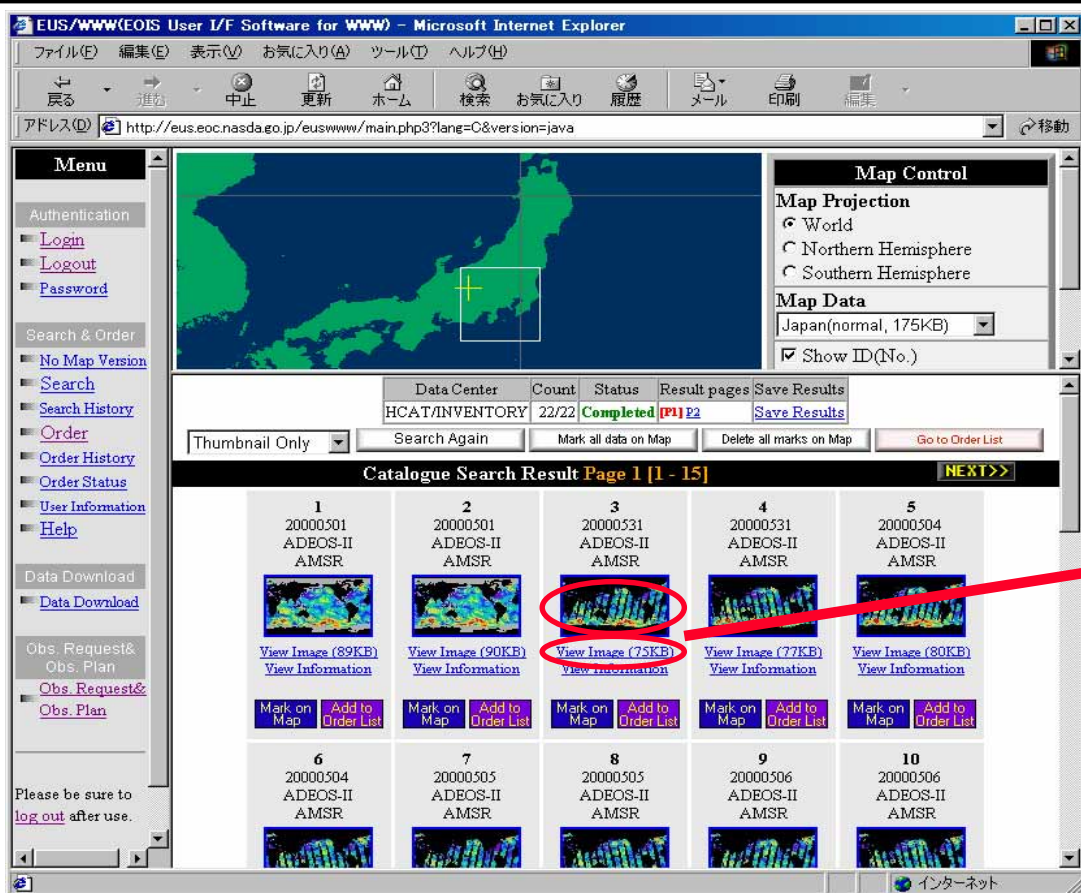
Media	DLT Online CD-ROM
Step 1 Processing Level	1BM:PRC_LVL 1BM 2:PRC_LVL 2 2M-Mapped Data
Product Code for ADEOS-II/AMSR-E	SS:Suspended solid weight(Level-2Map) ST:Sea surface temperature(Level-2Map) ST_FR:Sea surface temperature(full resolution)(Level-2)

Go to Step 2 Selecting Product name Cancel Setting recommended

Set the product type. Click the button "Go to Step 2 Selecting Product name". After selecting the product type, then the next step page appears.
Click the "Setting recommended" button, then the order information is set with the recommended values.
Click the "Cancel" button to move back to the order list page without saving.

Order parameter setting

Browse image on EUS/WWW (sample of AMSR Level3)



Click "thumbnail" or "View Image" link

Catalog Information

- All of standard products processed at the EOC according to the observation plan will be available in the catalog search :
 - AMSR Level 1A, 1B
 - AMSR Level 2
 - AMSR Level 3
 - GLI-1km Level 1A, 1B
 - GLI-1km Level 2A
 - GLI-1km Level 2
 - GLI-1km Level 3 Binned
 - GLI-1km Level 3 STA Map
 - GLI-250m Level 1A, 1B

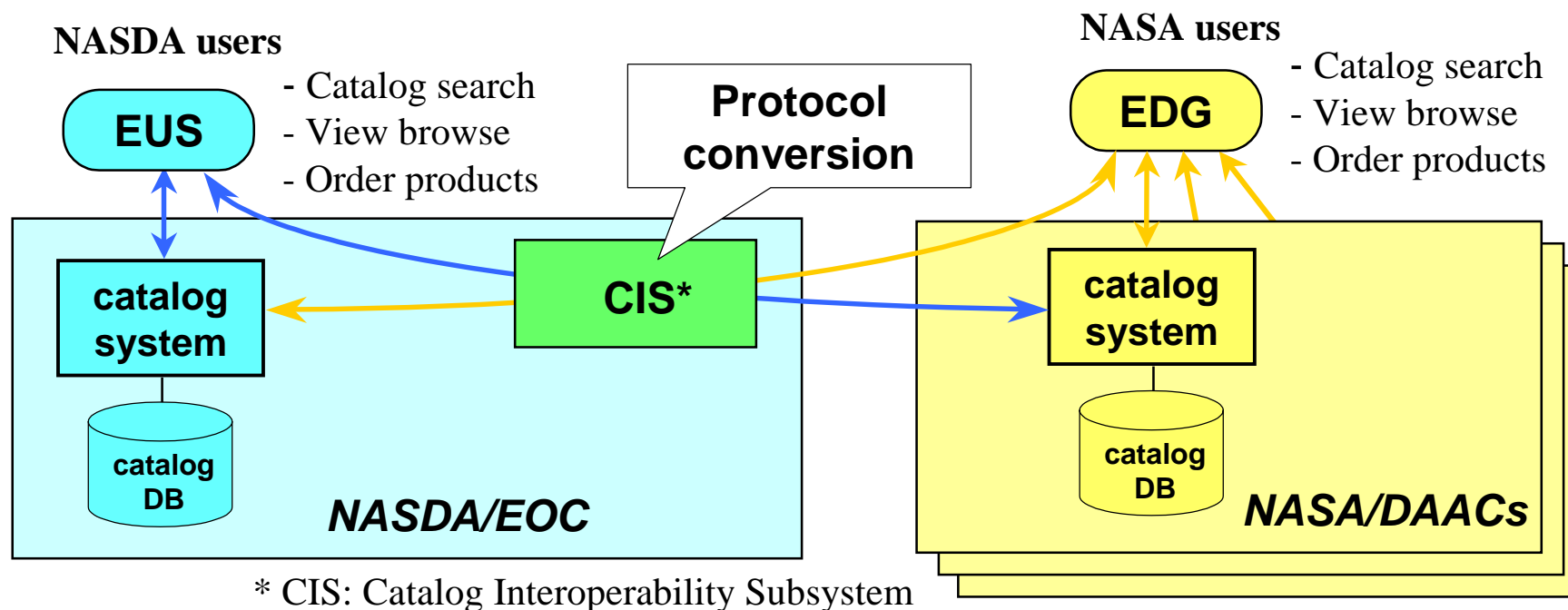
Browse search

- Browse data of the following products are available via the EUS

- AMSR	Level 3 (daily)	Brightness Temperature 6.9 GHz V (A/D)
- AMSR	Level 3 (daily)	Brightness Temperature 36.5 GHz V (A/D)
- AMSR	Level 3 (daily)	Brightness Temperature 89.0 GHz V (A/D)
- AMSR	Level 3 (daily, monthly)	Water Vapor (A/D)
- AMSR	Level 3 (daily, monthly)	Cloud Liquid Water (A/D)
- AMSR	Level 3 (daily, monthly)	Amount of Precipitation (A/D)
- AMSR	Level 3 (daily, monthly)	Sea Surface Wind speed (A/D)
- AMSR	Level 3 (daily, monthly)	Sea Surface Temperature (A/D)
- AMSR	Level 3 (daily, monthly)	Soil Moisture (A/D)
- AMSR	Level 3 (daily, monthly)	Ice Concentration (A/D)
- AMSR	Level 3 (daily, monthly)	Snow Water Equivalence (A/D)
- GLI-1km	Level 1B	VNIR (R:ch.13, G:ch.8, B:ch.5)
- GLI-1km	Level 1B	SWIR (ch.26)
- GLI-1km	Level 1B	MTIR (ch.35)
- GLI-1km	Level 2	All products processed according to plan (except for CLFLG_p and PGCP)
- GLI-1km	Level 3 STA Map	All products
- GLI-250m	Level 1B	(R:ch.22, G:ch.21, B:ch.20)

Catalog interoperability with NASA

- Both NASDA and NASA PIs can access ADEOS-II information service from NASDA and NASA data center using each client system provided each agencies



Catalog interoperability (access from NASA/EDG)

EOS Data Gateway: Primary Data Search - Netscape

ファイル(F) 編集(E) 表示(V) ジャンプ(G) Communicator(C) ヘルプ(H)

場所: <http://lytagisfc.nasa.gov/80/ims-bin/ecs-ts1/nph-ims.cgi/u788321#SCROLL>

Search Creation: Primary Data Search
[Help for this page](#)

User Name: guest

Search and Order
[User Preferences](#)
[Search Creation](#)
[Search Status](#)
[Results: Data Set](#)
[Results: Granule](#)
[My Folder](#)
[Shopping Cart](#)
[Exit to Home](#)

Help
[Tutorial](#)
[FAQ](#)
[User Manual](#)

Problems/Comments
[User Support](#)
[Check Order Status](#)
[Other EDG Sites](#)
[HDF Viewing Tools](#)

Search Types
[Primary Data Search](#)
[Local Granule ID](#)
[Data Granule ID](#)
[Detailed Document](#)
[Summary Document](#)
[Browse Search](#)

Choose Search Keywords

Data Set
[Edit](#) [Delete](#)
AMSR-E/AQUA L2B GLOBAL SWATH OCEAN PRODUCTS DERIVED FROM WENTZ ALGORITHM V001
HEOC AMSR LEVEL 2 SST

Sensor
[Edit](#) [Delete](#)
AMSR
AMSR-E

Method 1: Data Set Lookup
[Match ANY] [Hint](#) [GO](#)

Method 2: Choose from at least 1 category:
SELECT ->
DATA SET
DATA CENTER
PARAMETER
PROCESSING LEVEL
SENSOR
SOURCE
COLLECTION DETAILS
ORBIT

Choose Search Area
[Find location using Gazetteer](#)

Type in Lat/Lon Range
a range of latitudes and longitudes to specify region. Formats: degree or degree:minute or minute:second.

Northern latitude: 90.0000
Southern latitude: -90.0000
Eastern longitude: 180.0000
Western longitude: -180.0000
[Map]

Catalog search criteria
Sensor: AMSR, AMSR-E
Data set: NSIDC AMSR-E L2B
EOC AMSR L2 SSW

EOS Data Gateway: Listing - Netscape

ファイル(F) 編集(E) 表示(V) ジャンプ(G) Communicator(C) ヘルプ(H)

場所: ms.cgi?endform=1&u=788539&sid=1002788131&D582991&mode=SEARCH&submode=COMMTRACE

Results: Data Set: Listing
[Help for this page](#)

List data granules Add data granules to cart Add data granules to folder for data sets selected on all pages

No items are currently selected.
[Customize this table](#) - change columns, sort order, number of rows, etc. [Text only version](#) - for printing or import into a spreadsheet.

Select	Options...	Data set	Number of Granules	Sources	Sensors
<input type="checkbox"/>	Other links Summary document Detailed document	HEOC AMSR LEVEL 2 SST	100 (more are known)	ADEOS-II	AMSR
<input type="checkbox"/>	Other links Summary document Detailed document	AMSR-E/AQUA L2B GLOBAL SWATH OCEAN PRODUCTS DERIVED FROM WENTZ ALGORITHM V001	82 (of 82)	AQUA	AMSR-E

The last search you submitted was for:

- Data Set: AMSR-E/AQUA L2B GLOBAL SWATH OCEAN PRODUCTS DERIVED FROM WENTZ ALGORITHM V001, HEOC AMSR LEVEL 2 SST
- Geographic Region: 90.00000° to -90.00000° Lat, -180.00000° to 180.00000° Lon
- Sensor: AMSR, AMSR-E

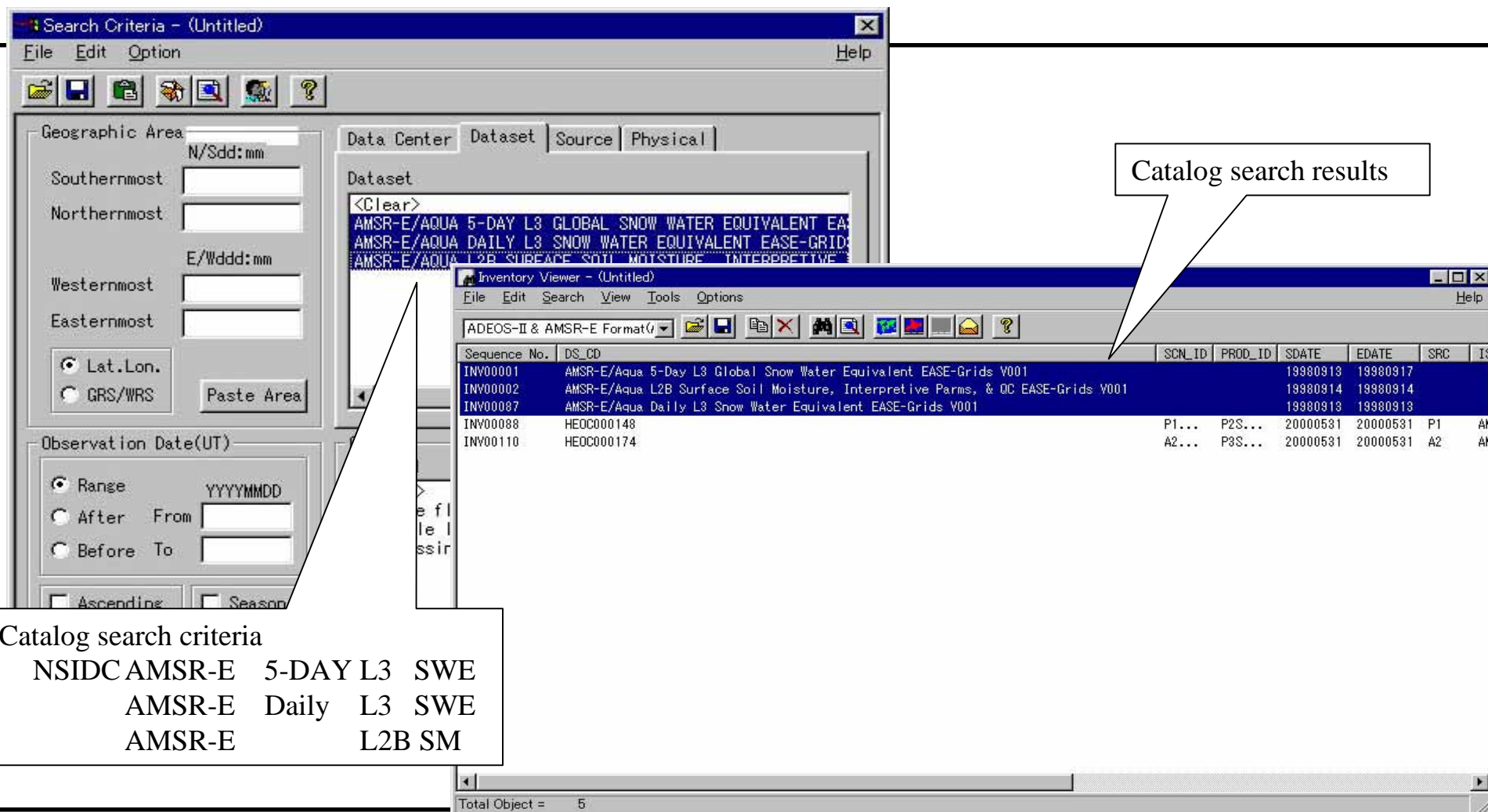
If you [save this query to your machine](#), you can restore it later into entering its URL into the special field at the bottom of the search page.

Comments, Questions, or Problems? [Email us](#)
Created by EOS Data Gateway version 3.4b.1
NASA Task Representative: Robin Pfister (Mail)

ドキュメント: 完了。

Catalog search result
HEOC AMSR L2
NSIDC AMSR-E L2B Ocean

Catalog interoperability (access from NASDA EUS/GUI)

The screenshot displays the NASDA EUS/GUI interface. The 'Search Criteria - (Untitled)' window is active, showing search parameters for geographic area and observation date. The 'Dataset' list includes AMSR-E/AQUA 5-DAY L3 GLOBAL SNOW WATER EQUIVALENT EASE-GRIDS, AMSR-E/AQUA DAILY L3 SNOW WATER EQUIVALENT EASE-GRIDS, and AMSR-E/AQUA L2B SURFACE SOIL MOISTURE INTERPRETIVE. The 'Inventory Viewer - (Untitled)' window shows the search results in a table format.

Catalog search criteria

- NSIDC AMSR-E 5-DAY L3 SWE
- AMSR-E Daily L3 SWE
- AMSR-E L2B SM

Catalog search results

Sequence No.	DS_CD	SCN_ID	PROD_ID	SDATE	EDATE	SRC	IS
INV00001	AMSR-E/Aqua 5-Day L3 Global Snow Water Equivalent EASE-Grids V001			19980913	19980917		
INV00002	AMSR-E/Aqua L2B Surface Soil Moisture, Interpretive Params. & QC EASE-Grids V001			19980914	19980914		
INV00007	AMSR-E/Aqua Daily L3 Snow Water Equivalent EASE-Grids V001			19980913	19980913		
INV00088	HEOC000148	P1...	P2S...	20000531	20000531	P1	AK
INV00110	HEOC000174	A2...	P3S...	20000531	20000531	A2	AK

Total Object = 5

Off-line data distribution

There are two ways of off-line data distribution

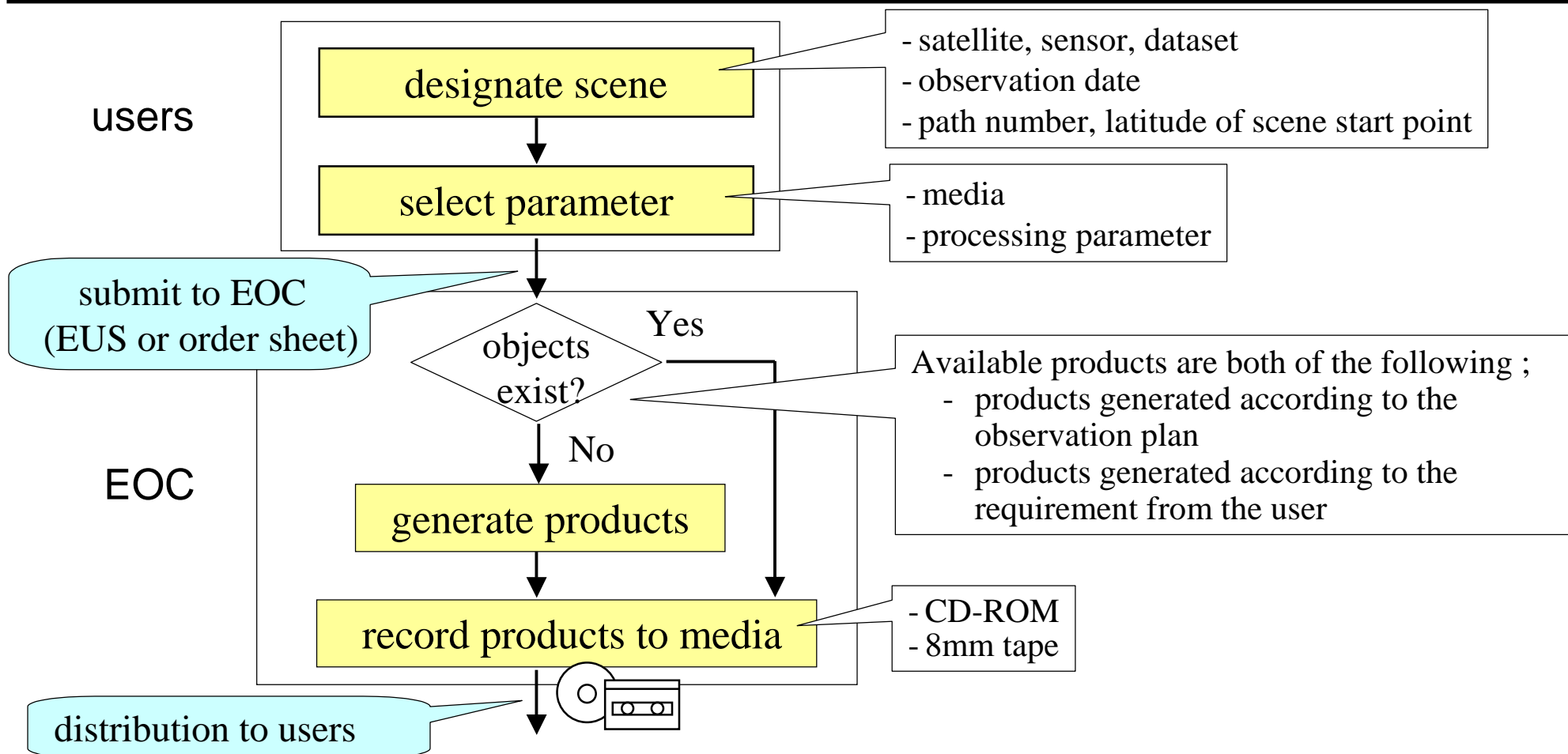
1. Standard product orders (Scene orders)

- Distribution of each products identified in catalog searches
- All standard products processed at the EOC are available
- Ordering : both on-line by EUS and off-line by order sheet are available

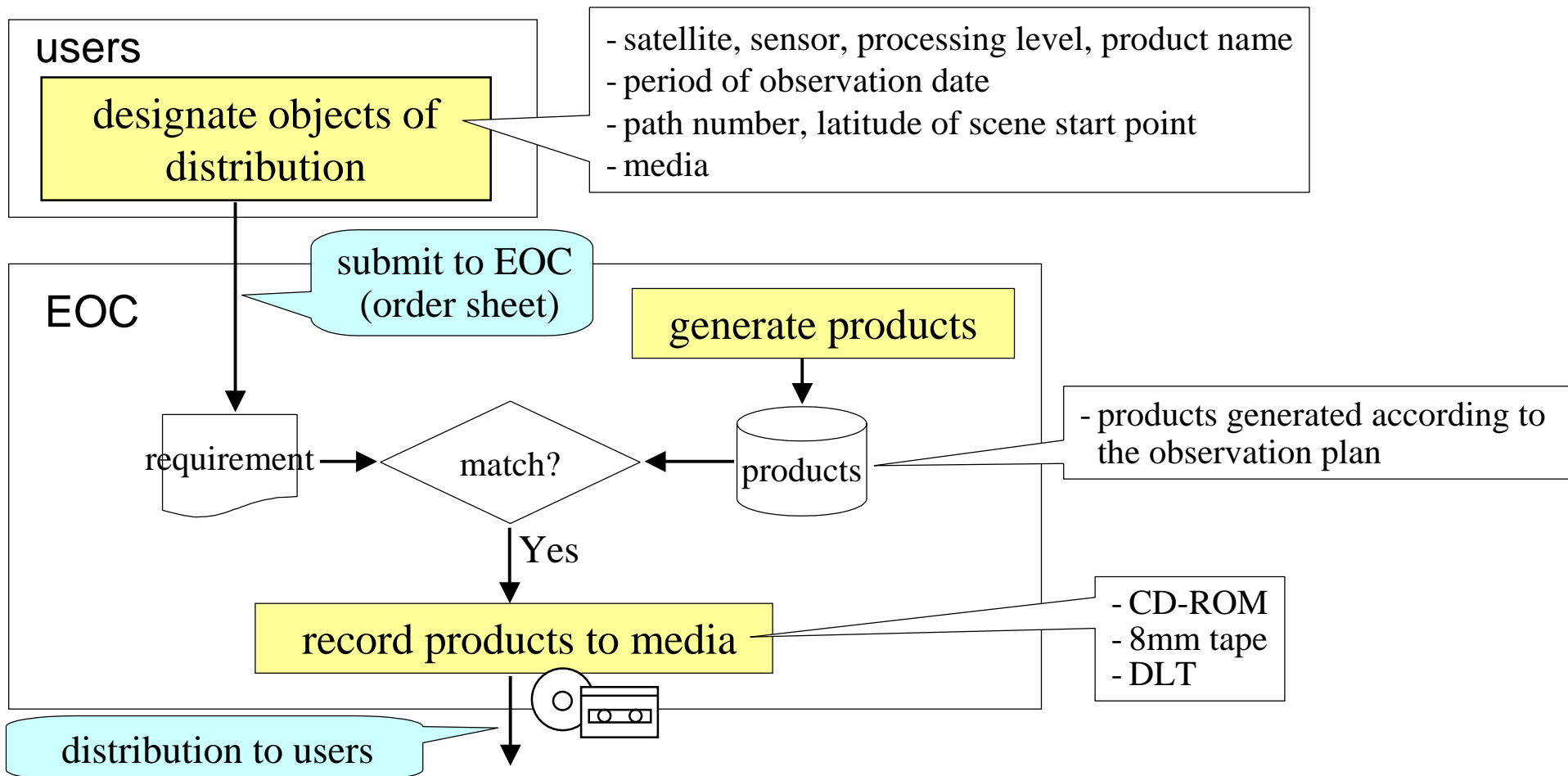
2. Standing orders

- Periodical distribution of products according to the requirements from users submitted beforehand
- The following products, generated according to sensor observation plans, are available :
 - AMSR Level 1A , 1B , 2 , 3
 - GLI-1km Level 1A , 1B , 2 , 3 Binned , 3 STA Map
 - GLI-250m Level 1A , 1B
- Ordering : off-line interface only (contact point will be EORC order desk)
- Standing order service is provided only to PIs and relevant agencies

Procedure of scene order method



Procedure of standing order method



Media and format

Scene order

	CD-ROM	8mm tape
Capacity	650 MB	5 GB
Recording Format	Joliet*	tar
Data Format	NCSA-HDF	NCSA-HDF

* Enhancement format of ISO9660, long file name is available

Standing order

	CD-ROM	8mm tape	DLT
Capacity	650 MB	5 GB	35 GB
Recording Format	Joliet*	tar**	tar**
Data Format	NCSA-HDF	NCSA-HDF	NCSA-HDF

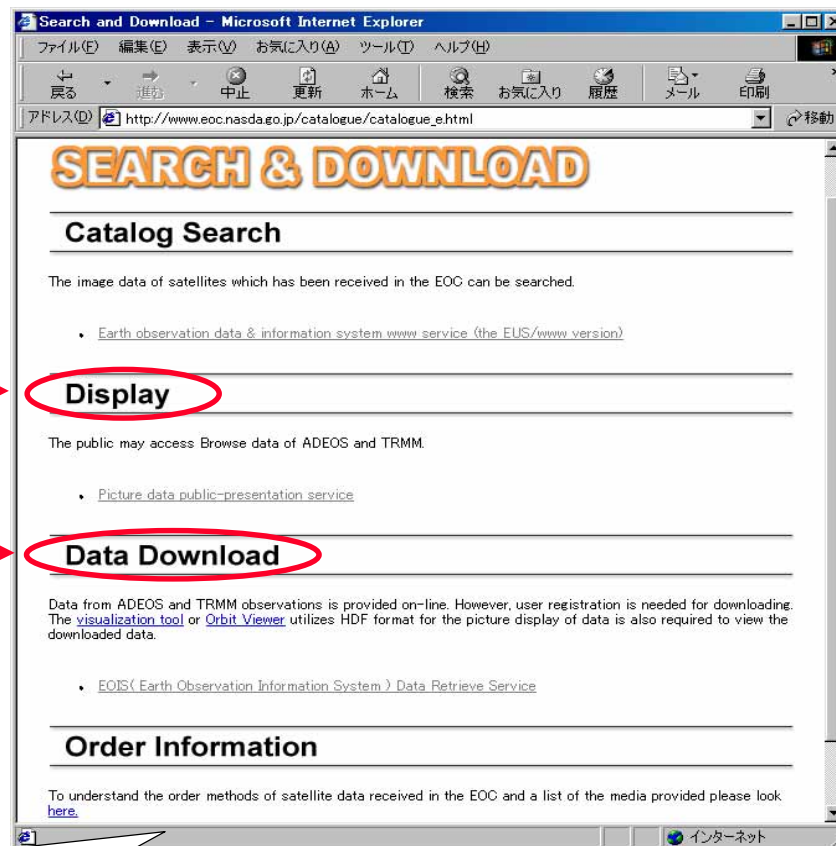
** Every file is archived by “tar command” and added to the media

- DVD will be available after the increase of distribution capacity

On-line data distribution

There are three services in on-line data distribution

1. Exhibition of graphical images on the WWW > “Display” →
2. Distribution of standard products via the internet > “Data Download” →
3. Data transmission to relevant agencies



http://www.eoc.nasda.go.jp/catalogue/catalogue_e.html

Top page of graphical image service

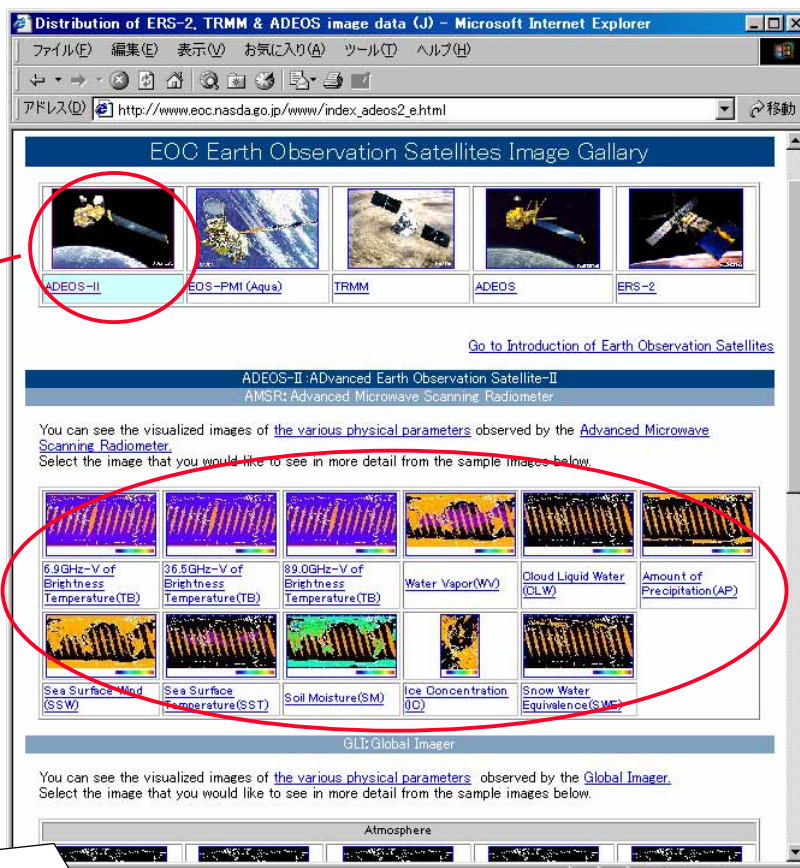
EOC homepage

> Display →

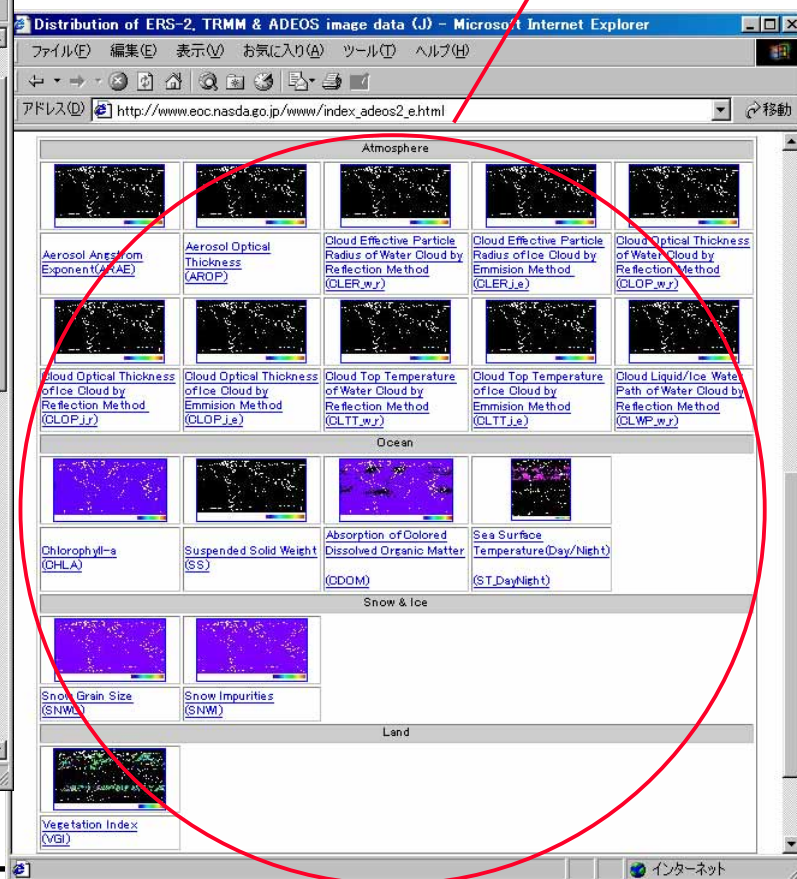
ADEOS-II

AMSR products

GLI products



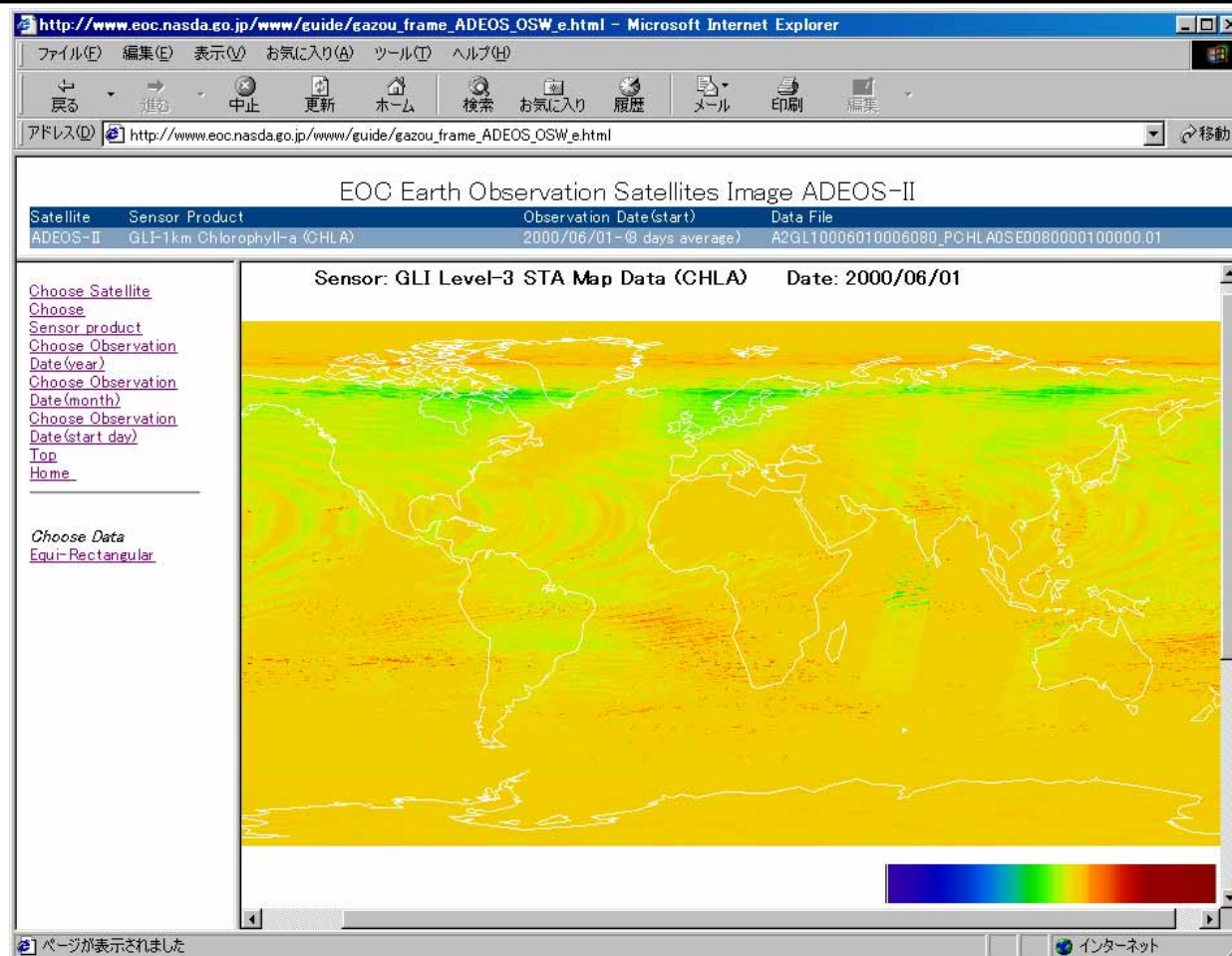
http://www.eoc.nasda.go.jp/www/index_e.html



Graphical images (sample of GLI-1km)

Users choose :

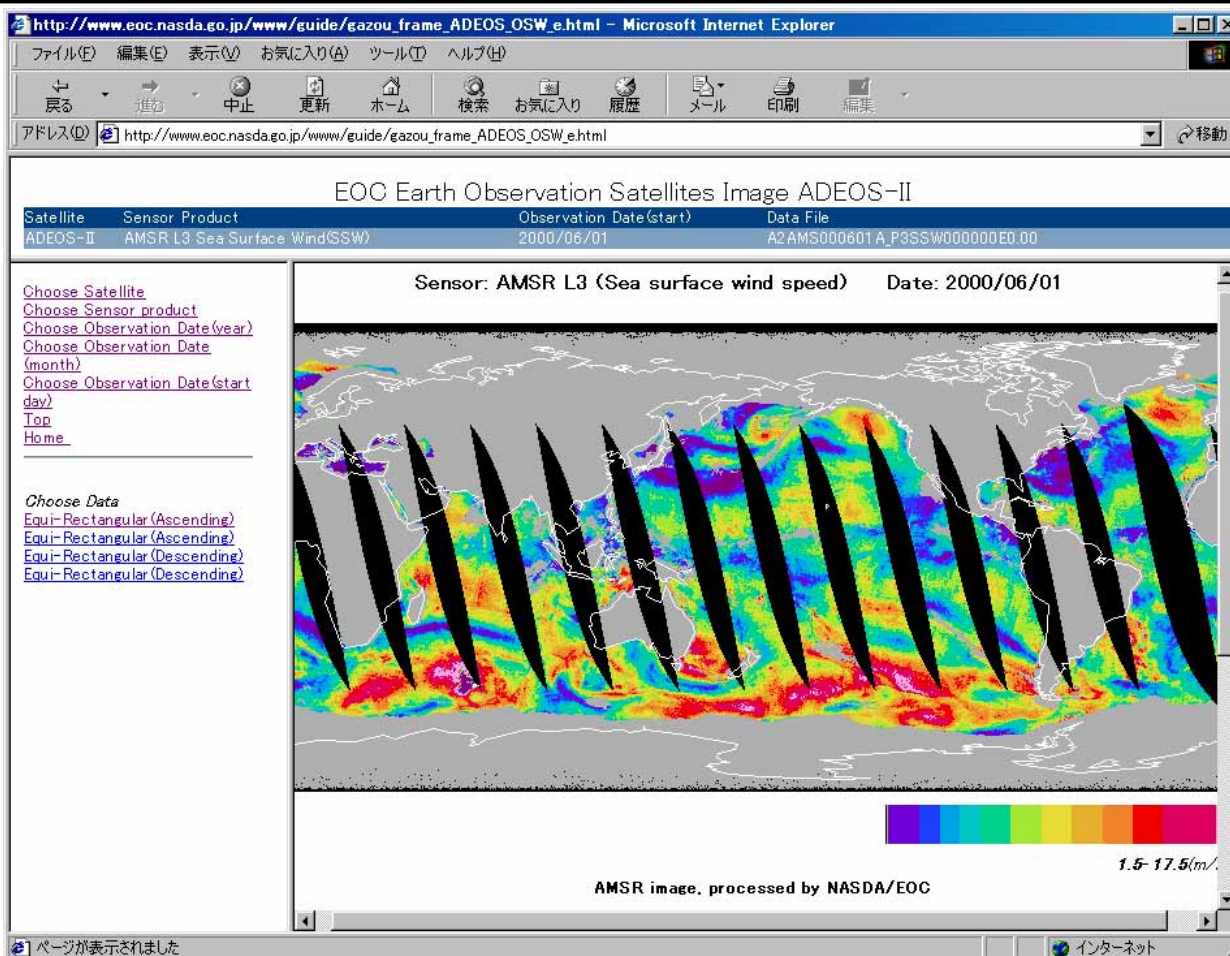
- satellite
- sensor
- product name
- observation date
- processing period
(8days, 16days, 1month)
- map projection



Graphical images (sample of AMSR)

Users choose :

- satellite
- sensor
- product name
- observation date
- processing period
(day / month)
- map projection
- orbit direction
(Ascending / Descending)



Available products of graphical images (AMSR)

- Graphical images (GIF) of the following products are available on the WWW:

- AMSR	Level 3 (daily)	Brightness Temperature 6.9 GHz V (A/D)
- AMSR	Level 3 (daily)	Brightness Temperature 36.5 GHz V (A/D)
- AMSR	Level 3 (daily)	Brightness Temperature 89.0 GHz V (A/D)
- AMSR	Level 3 (daily, monthly)	Water Vapor (A/D)
- AMSR	Level 3 (daily, monthly)	Cloud Liquid Water (A/D)
- AMSR	Level 3 (daily, monthly)	Amount of Precipitation (A/D)
- AMSR	Level 3 (daily, monthly)	Sea Surface Wind speed (A/D)
- AMSR	Level 3 (daily, monthly)	Sea Surface Temperature (A/D)
- AMSR	Level 3 (daily, monthly)	Soil Moisture (A/D)
- AMSR	Level 3 (daily, monthly)	Ice Concentration (A/D)
- AMSR	Level 3 (daily, monthly)	Snow Water Equivalence (A/D)

A : Ascending
D : Descending

Available products of graphical images (GLI)

- Graphical images (GIF) of the following GLI-1km products are available on the WWW:

- GLI-1km	Level 3 STA Map (16days, 1month)	ARAE (16days, 1 month)	} Atmosphere
- GLI-1km	Level 3 STA Map (16days, 1month)	AROP (16days, 1 month)	
- GLI-1km	Level 3 STA Map (16days, 1month)	CLER_w_r, CLER_i_e	
- GLI-1km	Level 3 STA Map (16days, 1month)	CLOP_w_r, CLOP_i_r, CLOP_i_e	
- GLI-1km	Level 3 STA Map (16days, 1month)	CLTT_w_r, CLTT_i_e	
- GLI-1km	Level 3 STA Map (16days, 1month)	CLWP_w_r	
- GLI-1km	Level 3 STA Map (8days, 1month)	CHLA	} Ocean
- GLI-1km	Level 3 STA Map (8days, 1month)	SS	
- GLI-1km	Level 3 STA Map (8days, 1month)	CDOM	
- GLI-1km	Level 3 STA Map (8days, 1month)	ST_DayNight	} Land
- GLI-1km	Level 3 STA Map (16days)	VGI	
- GLI-1km	Level 3 STA Map (16days, 1month)	SNWG	} Cryosphere
- GLI-1km	Level 3 STA Map (16days, 1month)	SNWI	

On-line data distribution (Data Download)

Standard products distribution

- The following products are available via the internet during the most recent 6 months
 - All of AMSR Level 3 products
 - All of GLI-1km Level 3 STA Map products
(except for NW, LA, K490, ST_DayNight, because of the large file size)
- This service is available to all registered users, including PIs
- User account will be issued immediately

TRMM Product List - Microsoft Internet Explorer

アドレス(D) http://drs.eoc.nasda.go.jp/regform_e.html

**Online Data Retrieve Service
User Registration**

Fill in the following form, then click the "Register" button to register.

"*" mark items are essential.

* User Name **User name (free words)**

* Business Type **User category**

Mail Address **E-mail address***

*** option**

[[Back](#)]

User registration window

Top page of data download service

EOC Homepage

> Data Download

- 1) registration
- 2) enter user name
- 3) check satellite/sensor
- 4) push “Execution”

* Currently, only TRMM products are available

http://drs.eoc.nasda.go.jp/index_e.html

Data Retrieve Service(DRS)
DRS provides free downloads of earth observation data via the WEB.
To use this service users are requested to [register](#). For more details, please refer to the [service overview](#).

Information

- TRMM's orbit was successfully raised to 402.5km (Aug 31, 2001)

This page is operated by NASDA/EOC.
This page is free to link. If you want to link to it, please use the banner on the right.

Registered users can download the following data.
Please select satellite/sensor, input your user name and press "Execution".

2) User Name Execution

Satellite	Sensor	Reference
TRMM	PR(1C21, 2A25)	Fixed area sub scene
	PR(1C21, 2A25, 3A25, 3A26)	Sub scene Full scene
	TMI(1B11, 2A12)	Sub scene
	TMI(1B11, 2A12)	NASA browse data
	VIRS(1B01)	Sub scene
	VIRS(1B01)	NASA browse data
	COMB(2A31)	Sub scene
Event data		Torrential rain, typhoon, etc.

Selection of download products

Online Data Retrieval Service Search Sensor Data - Microsoft Internet Explorer

ファイル(E) 編集(E) 表示(V) お気に入り(A) ツール(T) ヘルプ(H)

戻る 進む 中止 更新 ホーム 検索 お気に入り 履歴 メール

アドレス(D) http://drs.eoc.nasda.go.jp/cgi-bin/met10000

Online Data Retrieve Service

Search Sensor Data

Fill out the following search condition form.
If no condition be set for some item, leave the corresponding field blank.
Click "Search" to show the data list.

Satellite/Sensor: TRMM/PR

Input format

Observation Period From: 2001/07/01 00:00 2001/07/01 00:00:00 (YYYY/MM/DD hh:mm:ss)

Observation Period To: 2001/08/06 23:43 2001/08/06 23:43:00 (YYYY/MM/DD hh:mm:ss)

Product Name: 2A25

Display 10 matches per page.

Search

Set retrieval criteria of products

- observation date
- processing level
- product name

Online Data Retrieval Service Data List - Microsoft Internet Explorer

ファイル(E) 編集(E) 表示(V) お気に入り(A) ツール(T) ヘルプ(H)

戻る 進む 中止 更新 ホーム 検索 お気に入り 履歴 メール 印刷 編集

アドレス(D) http://drs.eoc.nasda.go.jp/cgi-bin/lst10000

Online Data Retrieve Service

Data List

Followings are data list that comply with your search.
Click "download" button after marking data you would like to get.
Clicking a "Detail" link will show you detail information of the data.

Satellite/Sensor: TRMM/PR

15553 data found. Showing 1-10 of them.

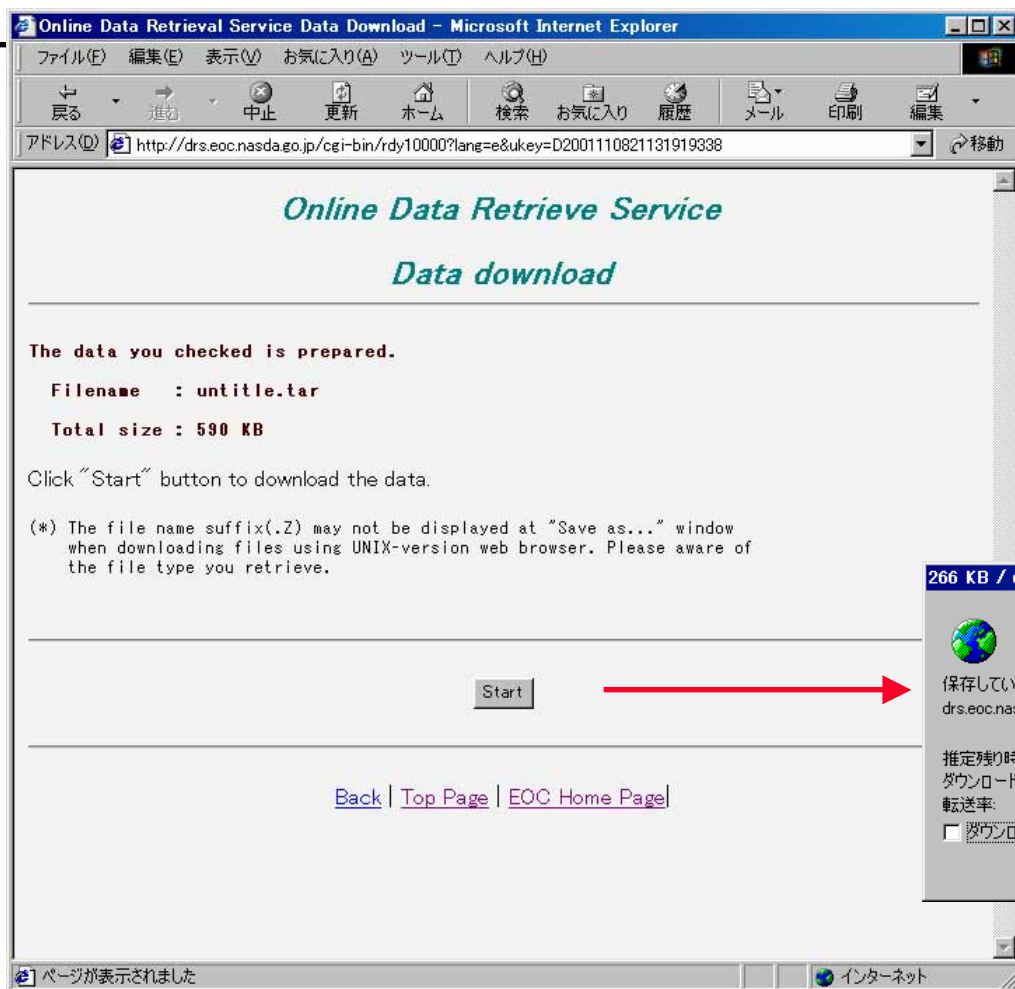
Check	Product	Observation Start Time	Observation End Time	File Name	File Size (KB)	Detail
<input type="checkbox"/>	2A25	2001/07/11 23:43:16	2001/07/11 23:45:13	T1PR2001071120849_2A25S0605.01.Z	678	Detail
<input checked="" type="checkbox"/>	2A25	2001/07/11 23:45:13	2001/07/11 23:47:28	T1PR2001071120849_2A25S0705.01.Z	297	Detail
<input checked="" type="checkbox"/>	2A25	2001/07/11 23:47:29	2001/07/11 23:49:49	T1PR2001071120849_2A25S0805.01.Z	294	Detail
<input type="checkbox"/>	2A25	2001/07/11 23:49:50	2001/07/11 23:52:19	T1PR2001071120849_2A25S0905.01.Z	372	Detail
<input type="checkbox"/>	2A25	2001/07/11 23:52:20	2001/07/11 23:55:00	T1PR2001071120849_2A25S1005.01.Z	424	Detail
<input type="checkbox"/>	2A25	2001/07/11 23:55:01	2001/07/11 23:57:55	T1PR2001071120849_2A25S1105.01.Z	410	Detail
<input type="checkbox"/>	2A25	2001/07/11 23:57:55	2001/07/12 00:01:02	T1PR2001071220849_2A25S1205.01.Z	548	Detail
<input type="checkbox"/>	2A25	2001/07/12 00:01:03	2001/07/12 00:04:20	T1PR2001071220849_2A25S1305.01.Z	425	Detail
<input type="checkbox"/>	2A25	2001/07/12 00:04:21	2001/07/12 00:07:42	T1PR2001071220849_2A25S1405.01.Z	435	Detail
<input type="checkbox"/>	2A25	2001/07/12 00:07:42	2001/07/12 00:10:59	T1PR2001071220849_2A25S1505.01.Z	915	Detail

Next page Download

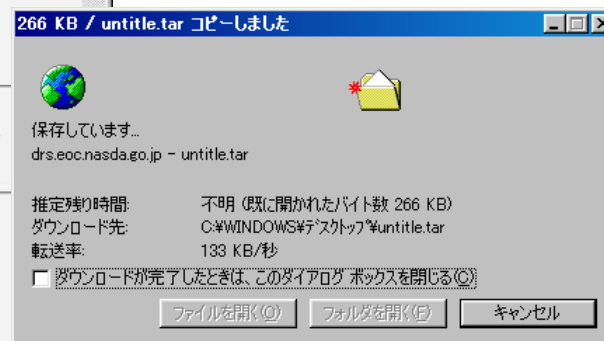
When several files will be download in one time, the files will be archived again with tar command.

Select products and begin download

Format of download data

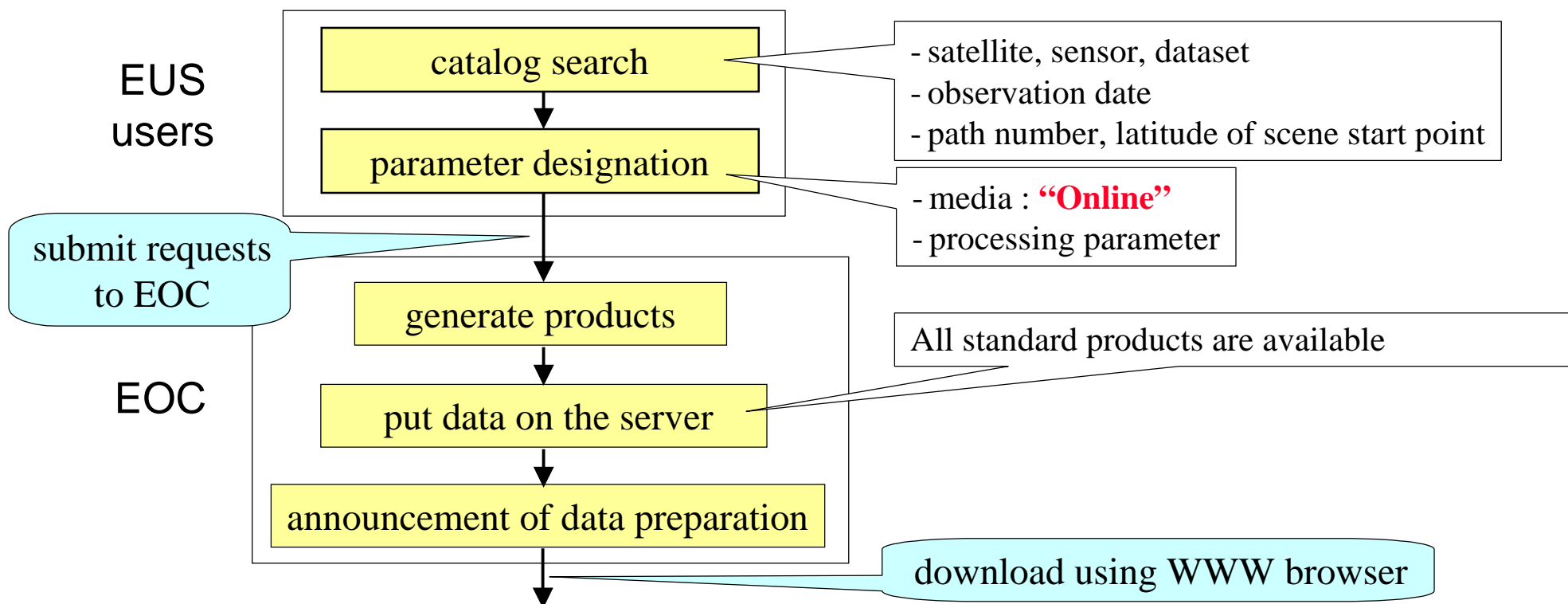


- Product will be compressed using “compress” command
- If plural files are selected, products will be archived using “tar” command



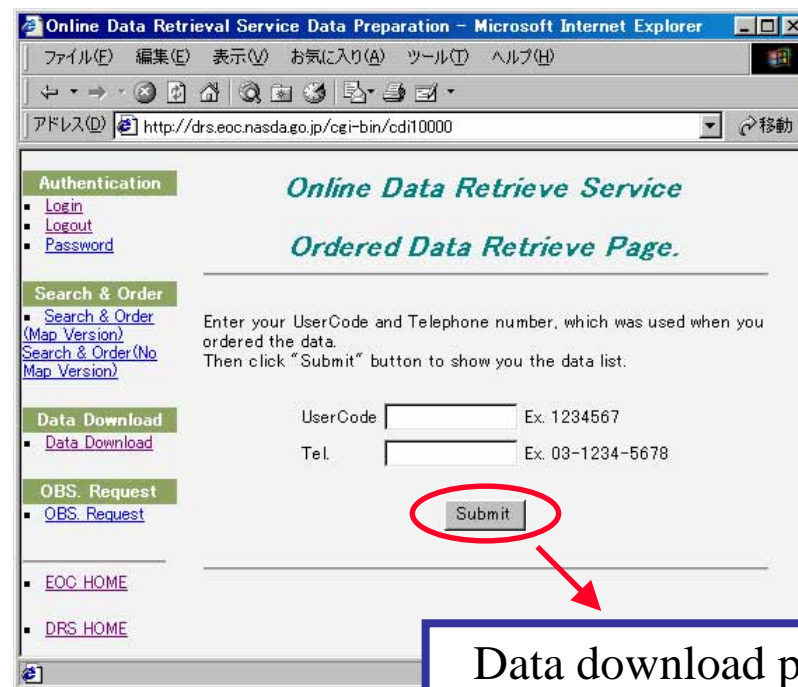
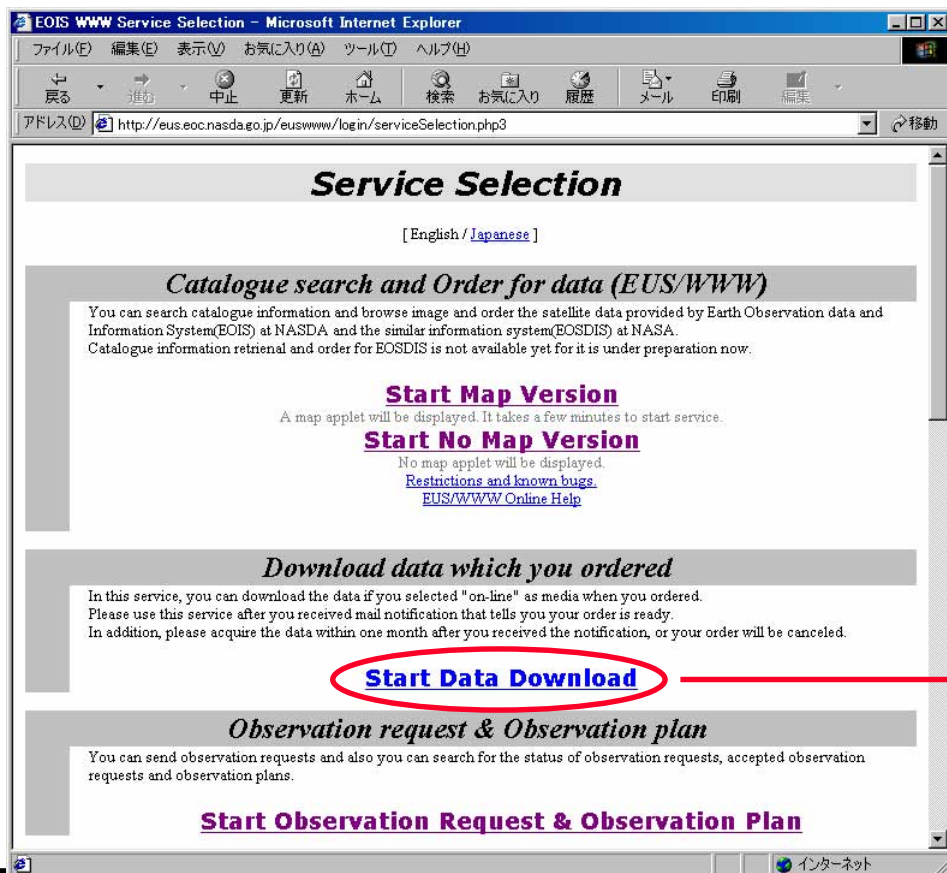
On-line distribution according to the scene order

- Designating the “on-line” option, EUS users are able to receive every standard products via the internet (only for PIs)



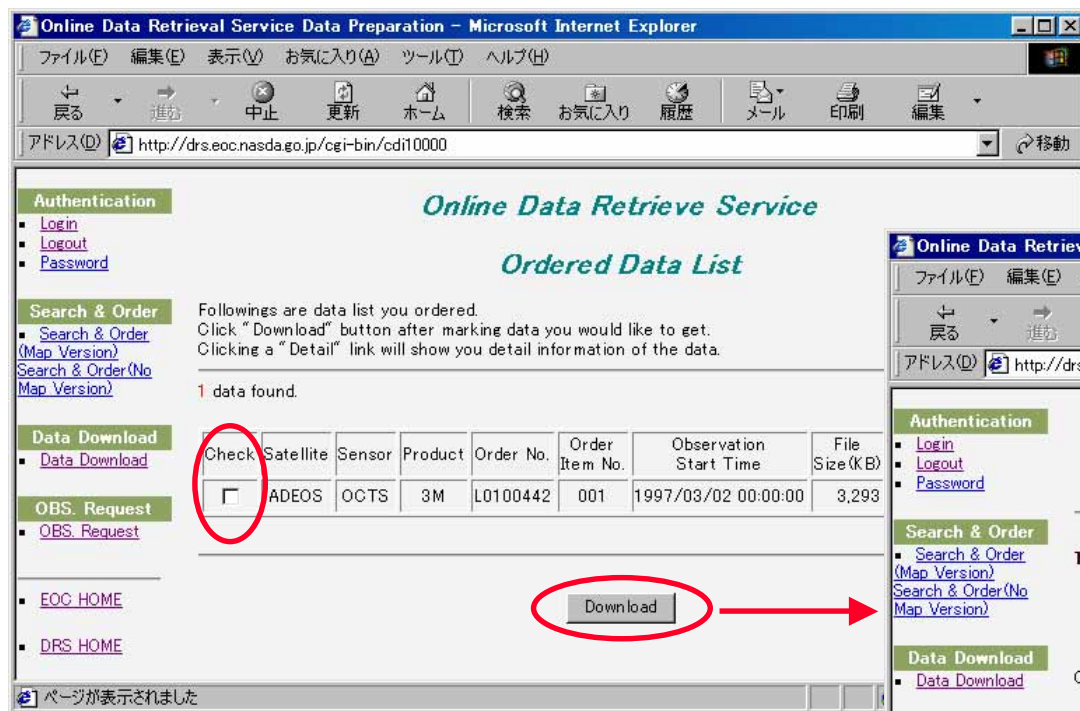
Ordered data retrieve

EOC Homepage > Search & Download > Catalog Search (EOIS WWW Service Login) >



Ordered data download page

- Products will be archived using “compress” and “tar”



Online Data Retrieve Service

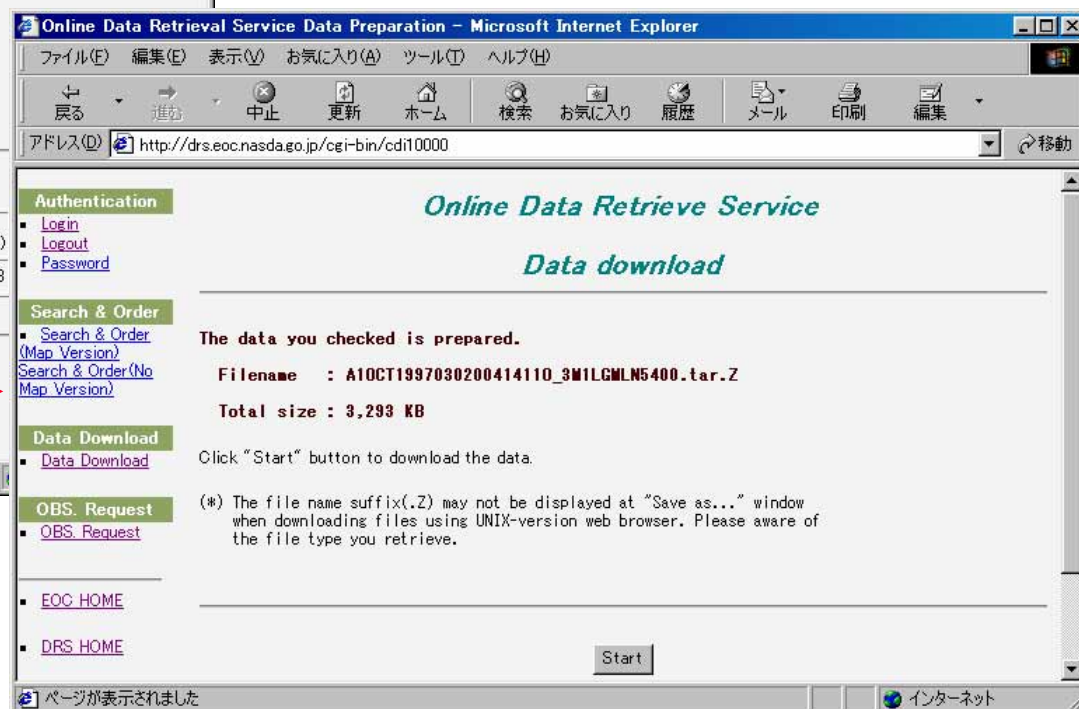
Ordered Data List

Followings are data list you ordered.
Click "Download" button after marking data you would like to get.
Clicking a "Detail" link will show you detail information of the data.

1 data found.

Check	Satellite	Sensor	Product	Order No.	Order Item No.	Observation Start Time	File Size (KB)
<input type="checkbox"/>	ADEOS	OCTS	3M	L0100442	001	1997/03/02 00:00:00	3,293

Download



Online Data Retrieve Service

Data download

The data you checked is prepared.

Filename : A10CT1997030200414110_3M1LGMLN5400.tar.Z

Total size : 3,293 KB

Click "Start" button to download the data.

(* The file name suffix(.Z) may not be displayed at "Save as..." window when downloading files using UNIX-version web browser. Please aware of the file type you retrieve.

Start

On-line data transmission

Near real-time data transmission

- The following data processed at the EOC are transmitted to relevant agencies immediately
 - AMSR Level 1A : JPL/PO.DAAC
 - AMSR Level 1B : EORC , JMA
 - AMSR Level 2 : EORC , JMA , JAFIC
 - GLI-1km Level 1B : EORC*, NOAA , JMA
 - GLI-1km Level 2 : EORC , JMA
 - GLI-1km Level 2 Map : EORC , JMA , JAFIC

* until the start of transmission to the JMA

Availability of each services

Services		PIs	the Public
EUS/GUI	Catalog and Browse	Available	N/A
	Scene Order	Available	N/A
EUS/WWW	Catalog and Browse	Available	Available
	Scene Order	Available	N/A
Standing Order		Available	N/A
Graphical images on the WWW		Available	Available
Data Download		Available	Available
Ordered Data Download		Available	N/A

Data distribution schedule from EOC

Services	Launch - L+4M	L+4M - L+9M	L+9M - L+12M	L+12M -
Catalog search and Data distribution	Distribution of sample data ←→			AMSR level 1 products release to PIs
		Distribution of sample data ←→		GLI level 1 products release to PIs
				AMSR level 1 products release to the public
				GLI level 1 products release to the public
				AMSR and GLI higher level products release
Graphical images on the WWW				Graphical image of AMSR and GLI data release
Data download via the internet				On-line data distribution service of AMSR and GLI release