



---

# **EOC User Services**

**Tomomi NIO**

**Earth Observation Center / NASDA**

**Email: [nio@eoc.nasda.go.jp](mailto:nio@eoc.nasda.go.jp)**



# EOC Systems for User Services

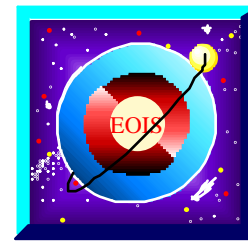
---

**EOC user services are provided by EOIS/DDMS\***

**\* NASDA Earth Observation data and Information System /  
Data Distribution and Management System**

**The main functions of the EOIS/DDMS are ;**

- to exchange data and information with relevant agencies
- to archive satellite data
- to provide catalogue information and browse images
- to manage orders for satellite data
- to distribute satellite data



# Development Status

---

- **EOIS enhancements for ADEOS-II level 1 products are now in the operational performance test phase.**
- **EOIS enhancements for ADEOS-II higher level products are now in the software design phase.**



# EOIS Development Schedule

year	1996			1997				1998				1999				2000				2001
	2nd	3rd	4th	1st	2nd	3rd	4th	1st	2nd	3rd	4th	1st	2nd	3rd	4th	1st	2nd	3rd	4th	1st
milestone	◆ ADEOS Launch			◆ TRMM Launch																
ADEOS-II (Level 1)	← Conceptual Design →			← Preliminary Design →				← Critical Design →				← Development & Test →				← Interface Test (1) →				
								PDR				CDR				Connectivity Test				
																Interface Test (2)*				
																Training				
ADEOS-II (Higher Level)												← Critical Design →				← Development & Test →				I/F Test

\* : test between processing systems



# User Services from EOIS

---

**EOIS user services at EOC are categorized as ;**

## **1. Catalogue information services**

- Catalogue search
- Browse search
- Product Order

## **2. Off-line data distribution service (on media)**

- Scene orders
- Standing orders

## **3. On-line data distribution service (via network)**

- Graphical images (GIF data) on the WWW
- Standard products via the internet (selected according to size)
- Data transmission to relevant agencies



# 1. Catalogue Information

## Data Ordering

- Users can submit orders for products identified in catalogue searches by the EUS



**URL: [http://www.eoc.nasda.go.jp/catalogue/catalogue\\_e.html](http://www.eoc.nasda.go.jp/catalogue/catalogue_e.html)**

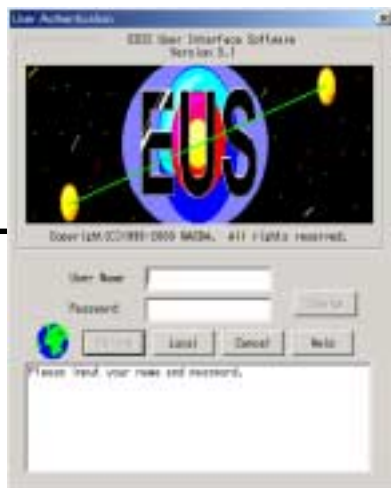


# EUS

---

## -What is EUS?

- EUS is the EOIS client used to retrieve catalogue and browse data, and to order products
- There are two types of EUS ;
  - EUS/GUI
  - EUS/WWW

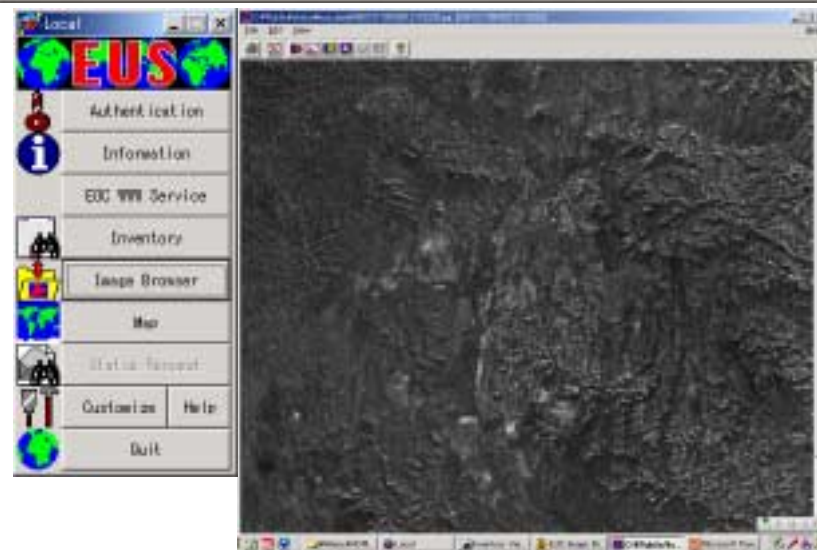


## Features of the EUS (1)

### EUS/GUI

- Application software for Windows 95 /98 /NT4.0  
(Operation on Windows 2000 / Me are not confirmed yet)
- For PIs and designated agencies only
- User registration is necessary

Sequence No.	DATE	TIME	LAT	LONG	ALT	...
3000001	19970905	AF	APN	1130	130	...
3000002	19970905	AF	APN	1130	130	...
3000003	19970905	AF	APN	1130	130	...
3000004	19970917	AF	APN	1130	130	...
3000005	19970917	AF	APN	1130	130	...
3000006	19970917	AF	APN	1130	130	...





# How to use EUS/GUI?

## What is necessary before using the EUS? Software download

- EUS/GUI download is available from the following site;
- URL : <http://www.eoc.nasda.go.jp/~eusadmin/homepage.html>

user name : eusadmin

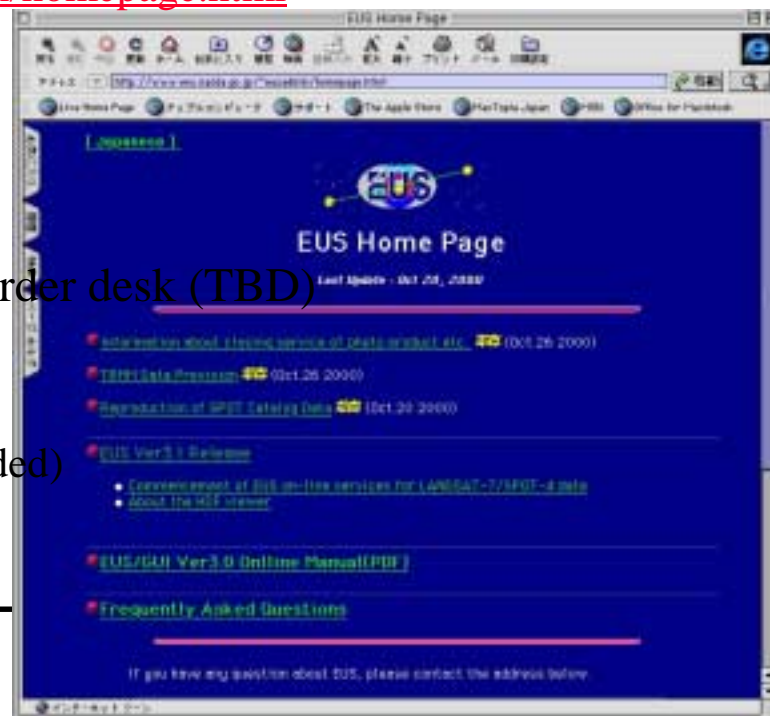
password : dontaku

## User registration

- Contact point for PIs will be set up at EORC order desk (TBD)
- Tentative contact point is as follows;

e-mail : [orderdesk@eorc.nasda.go.jp](mailto:orderdesk@eorc.nasda.go.jp) ( recommended)

Tel : +81-3-5561-8767 /Fax : +81-3-5561-9542





## Features of the EUS (2)

### EUS/WWW Gateway

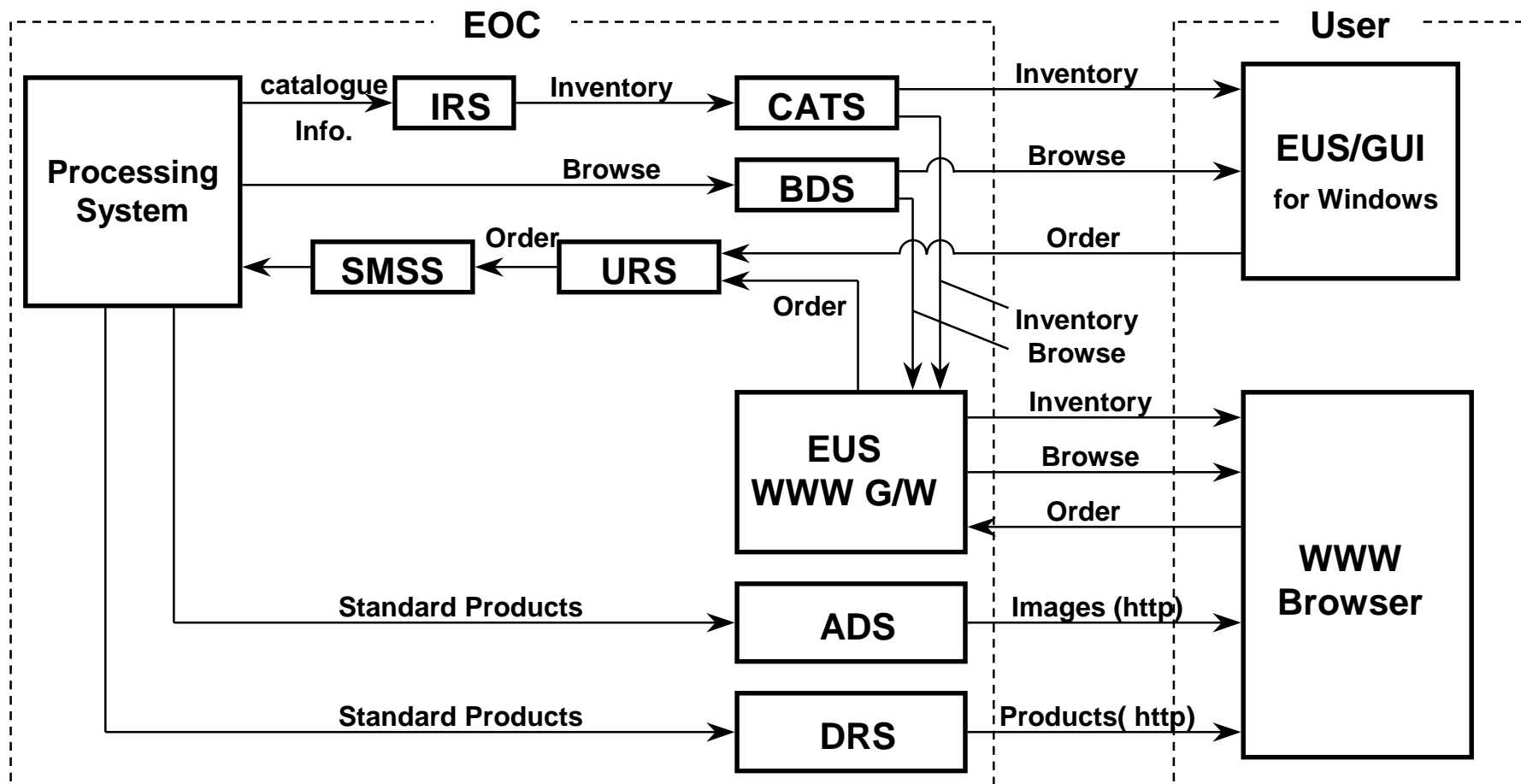
- Information service available via WWW browser software
- Catalogue search is available for all users
- Ordering interface is only for PIs ( user registration is necessary )



<http://eus.eoc.nasda.go.jp>



# Information Services Overview

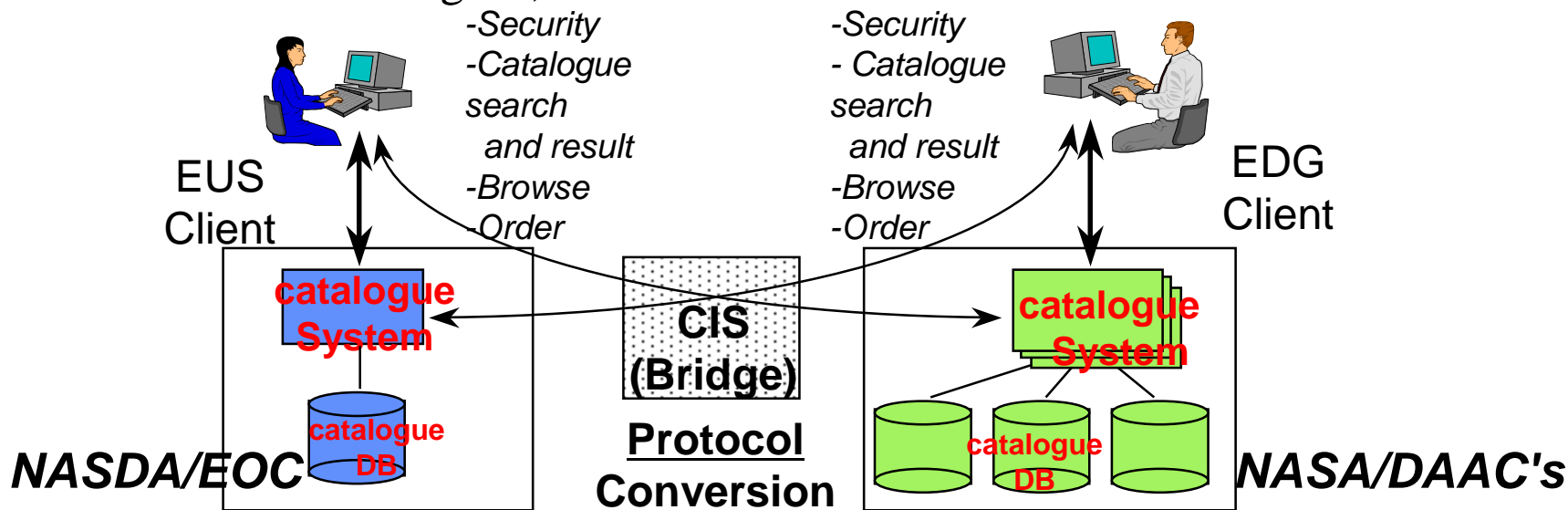




# Other Information Service

## Catalogue Interoperability with NASA

- NASDA and NASA will implement catalogue, browse and order interoperability for the ADEOS-II phase
- Both Japanese and U.S. PIs can search the ADEOS-II and other satellite catalogues, view browse and order data





## 2. Off-line Data Distribution

---

**There are two methods of off-line data distribution**

1. Standard product orders (Scene orders)

- distribution of each products identified in catalogue searches

2. Standing orders

- periodic distribution of products according to requirements submitted in advance



## 2. Off-line Data Distribution

---

### 2.1 Standard product orders (Scene orders)

- Products available : All standard products processed at the EOC
- Media : 8mm, CD-ROM, DLT
- Ordering : both on-line by EUS and off-line by FAX are available
- Format : NCSA-HDF
- Scene editing : will not be supported at the EOC

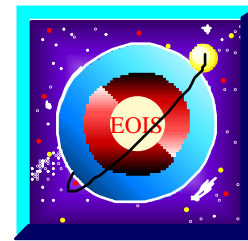


## 2. Off-line Data Distribution

---

### 2.2 Standing orders

- The following products, generated according to sensor observation plans, are available ;
  - AMSR Level 1A , 1B , 2 , 3
  - GLI-1km Level 1A , 1B , 2A , 2 , 3 Binned , 3 STA Map
  - GLI-250m Level 1A , 1B
- Distribution frequency : TBD (ex : 4 days, 16 days, 1 month)
- Media : 8mm, DLT
- Ordering : off-line by FAX only (contact point will be EORC order desk)
- Format : NCSA-HDF
- Scene editing : will not be supported at EOC
- This service is provided only to PIs and to the EORC



## 3. On-line Data Distribution

---

**There are three services in on-line data distribution**

1. Exhibition of graphical images on the WWW (ADS)
2. Distribution of standard products via the internet (DRS)
3. Data transmission to designated agencies



## 3. On-line Data Distribution (DRS)

### Standard product distribution

- DRS** - The most recent 6 months (or more) of the following products will be available via the internet (http)
- All of the [AMSR level 3](#) (daily/monthly) products
  - All of the [GLI-1km level 3 STA Map](#) products (except for NW, LA, K490, ST\_DayNight)
  - These products were chosen according to their data volume and available bandwidth
  - This service will be available to all registered users, including PIs.

- EUS** - Designating the “on-line” option, EUS users will be able to receive [all standard products](#) via this interface (only for PIs)

Online Data Retrieve Service Top Page - Microsoft Internet Explorer

Search and Download (検索) /index.html

### Online Data Retrieve Service Top Page

Data Retrieve Service distributes various Earth observation satellite sensor data to registered users via Web on-line service.

Japanese: [here](#)

To use this system refer to [user registration](#).

- [Service guide](#)
- User's [reference](#)
- Downloading sensor data  
After specifying sensor you are concerned, click "Submit" button.

Satellite	Sensor			
TRMM	<input type="radio"/> PR(Static)	<input type="radio"/> PR(Others)	<input type="radio"/> TMI	<input type="radio"/> TMI BROWSE
	<input type="radio"/> VIRS 1B01	<input type="radio"/> VIRS BROWSE	<input type="radio"/> COMB PR01	
ADEOS	<input type="radio"/> OCTS	<input type="radio"/> NSCAT		
	<input type="radio"/> L3BM			

User name

<http://drs.eoc.nasda.go.jp>

Any questions on this system should be addressed to the following [wwwadmin@eoc.nasda.go.jp](mailto:wwwadmin@eoc.nasda.go.jp)

ページが表示されました インターネット



## 3. On-line Data Distribution

---

### Near real-time data transmission

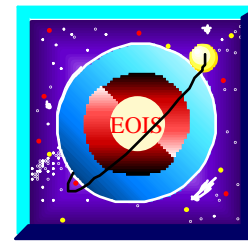
- The following data processed at the EOC will be transmitted to the listed agencies immediately

-AMSR Level 1A: JPL/PO.DAAC	-GLI-1km Level 1B	: NOAA , JMA
-AMSR Level 1B: EORC , JMA	-GLI-1km Level 2	: EORC , JMA
-AMSR Level 2 : EORC , JMA , JAFIC	-GLI-1km Level 2 Map	: EORC , JMA , JAFIC

#### \* Data transmission to the EORC

-GLI-1km level 1B data received at the EOC directly will be transmitted to the EORC until beginning the transmission to the JMA

-EORC users will be able to get other processed data according to their needs (On Demand Transmission interface)



# Release timing of services

---

## Release timing of higher level products

- The routine processing of standard higher level products (level 2 and higher) at the EOC will begin about 1 year later after the ADEOS-II launch
- The following services for higher level products from the EOC will also start at that time:
  - Browse search service via EUS (jpeg data)
  - Graphical image distribution service on the WWW (GIF data)
  - Standard product distribution service via the internet (http I/F)



# Schedule of Data Distribution from the EOC

year	2001				2002				2003				2004				2005			
	1st	2nd	3rd	4th	1st	2nd	3rd	4th	1st	2nd	3rd	4th	1st	2nd	3rd	4th	1st	2nd	3rd	4th
milestone	ADEOS-II Launch				C/O Phase				Mission Operation Phase											
					L+3M L+6M L+12M															
distribution					L1 data release to algorithm developer															
					L1 data release to the public															
					Higher level products release to the public															