

AMSR2 Research Product (Thin Sea Ice Detection) Validation Results

Japan Aerospace Exploration Agency (JAXA),
Earth Observation Research Center (EORC)

Remote Sensing Technology Center of Japan (RESTEC)

Thin Sea Ice Detection

- **Algorithm developer**

Kohei Cho (Tokai Univ.)

- **Algorithm overview**

Detection of thin sea ice (up to 30-cm thickness) using 18.7 GHz V and H T_B

- **Validation**

Comparison with MODIS TSI algorithm which detects thin sea ice using MODIS band 1 and 2 reflectance data.

- **Goal accuracy**

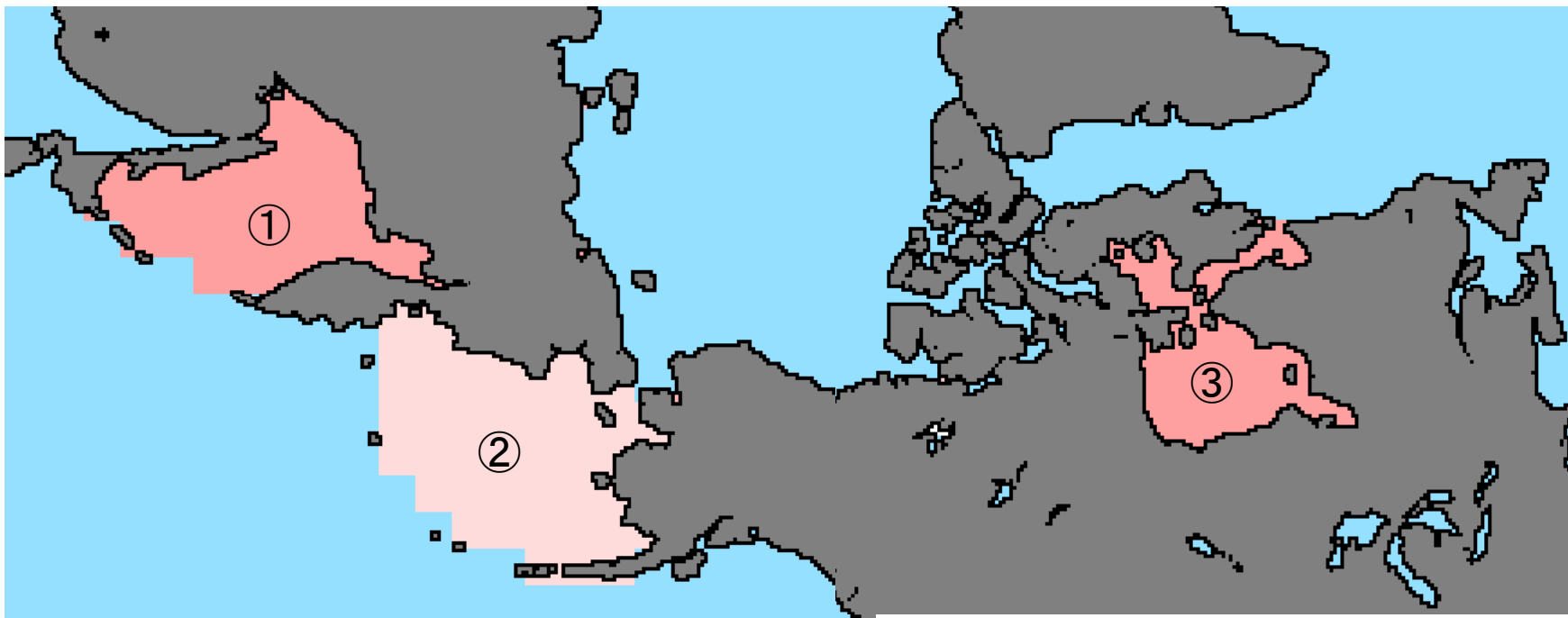
`right answer rate' of 80 % or more

`right answer rate' =

The number of pixels both MODIS and AMSR2 TSI algorithms evaluated as the same kind of ice (thick ice or thin ice)

The number of pixels where sea ice concentration is more than 90%₂

Validation area

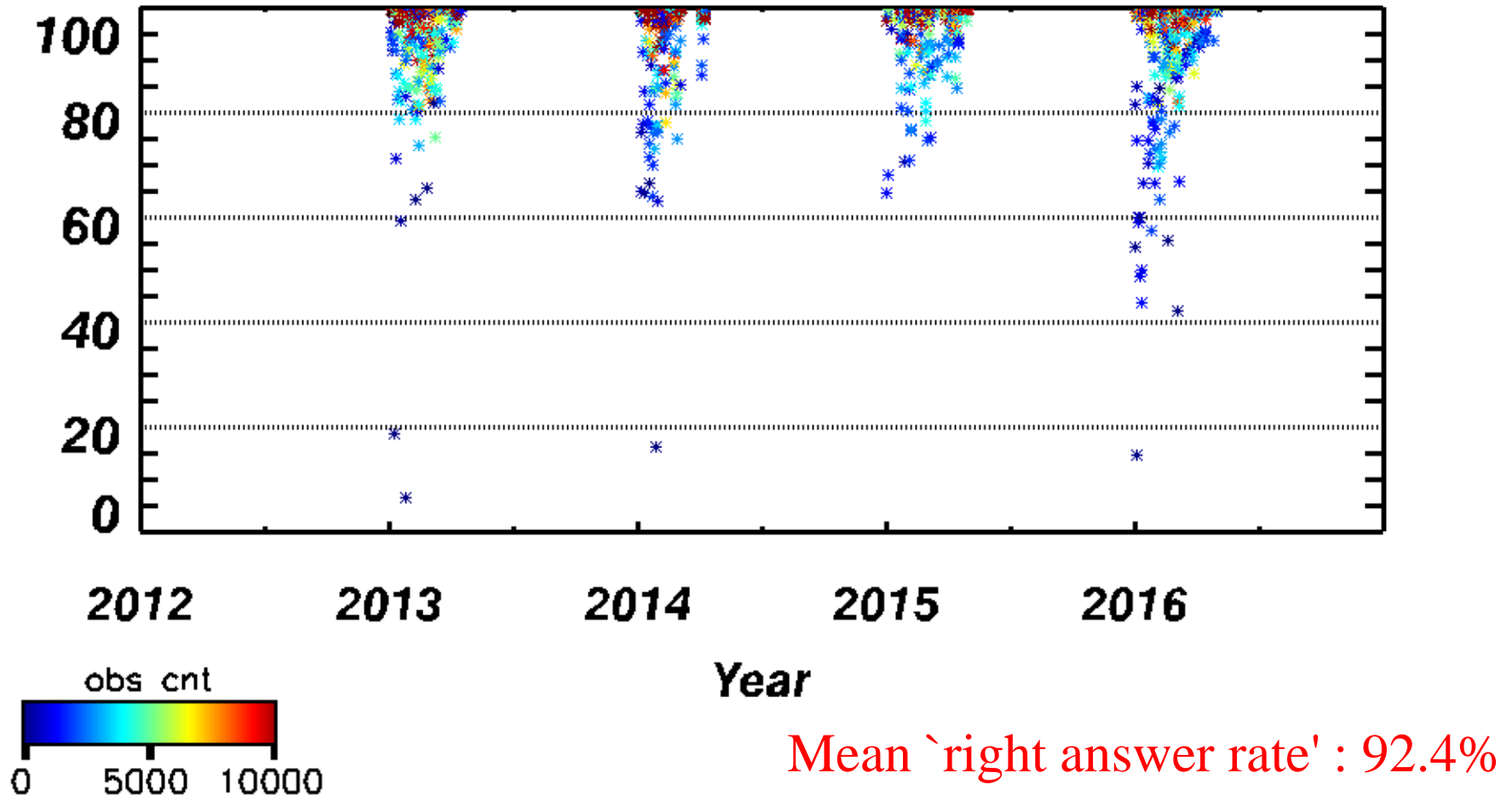


① Okhotsk Sea, ② Bering Sea, ③ Hudson Bay

Newly added as validation areas.

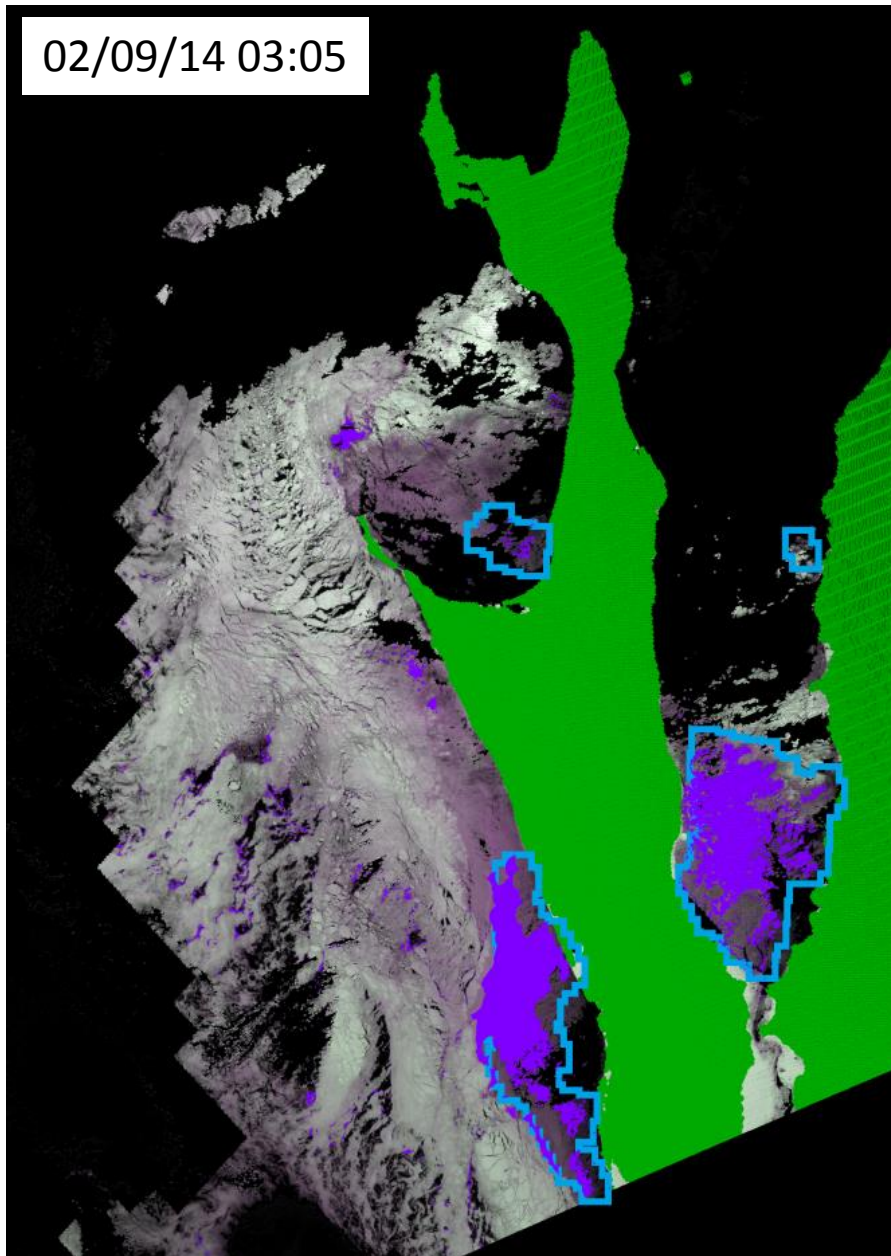
`Right answer rate' from 2013 to 2016 in Okhotsk Sea

Okhotsk TSI



`Right answer rate' became more than 80% in 676 out of 747 scenes.

02/09/14 03:05

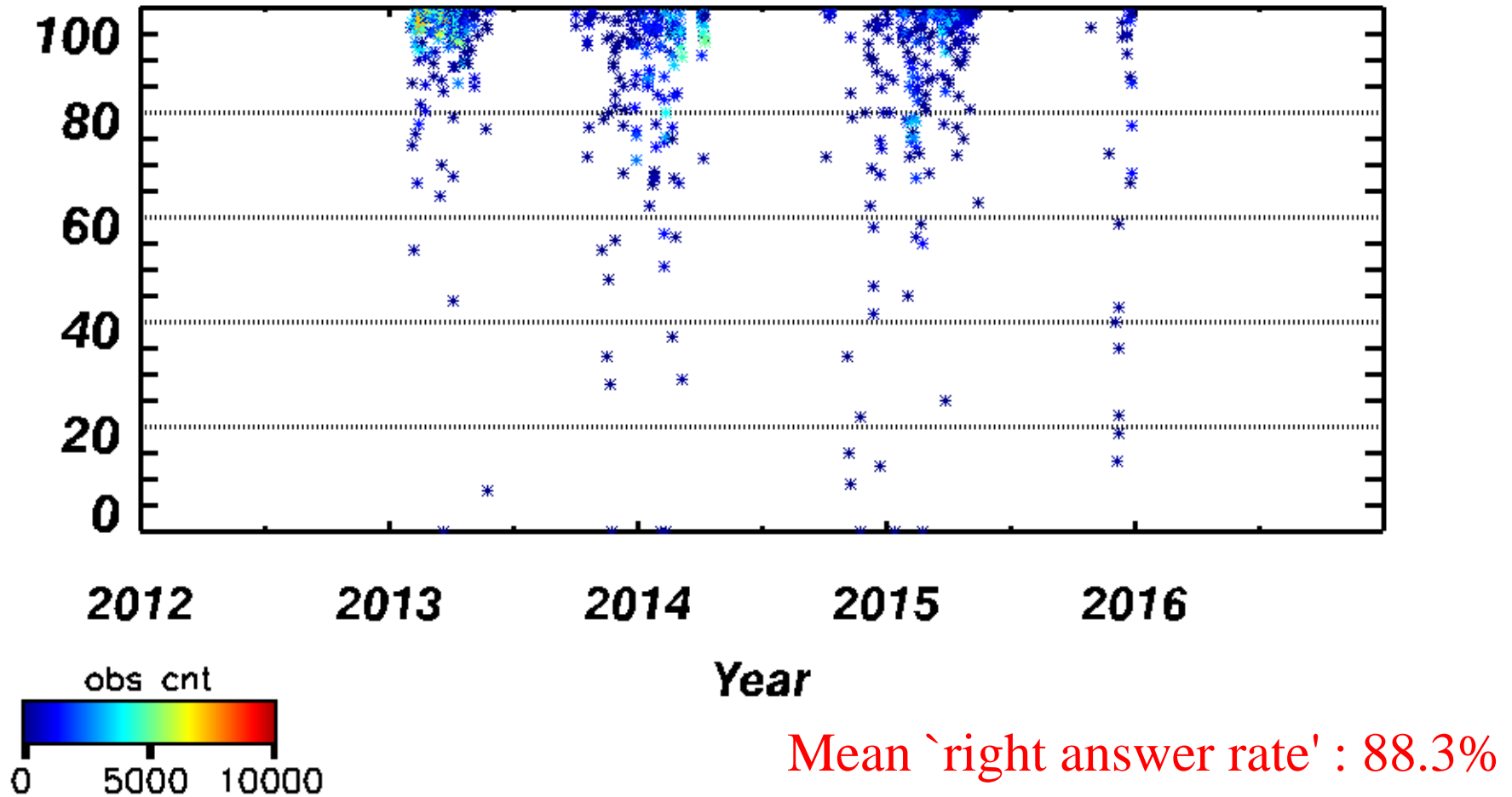


- Purple pixels : Thin Sea Ice by MODIS
- White pixels : Thick Sea Ice by MODIS
- Right blue frame : Thin Sea Ice by AMSR2
- Black pixels : Open water, cloudy area
- Green pixels : Land

'Right answer rate' 88.3%

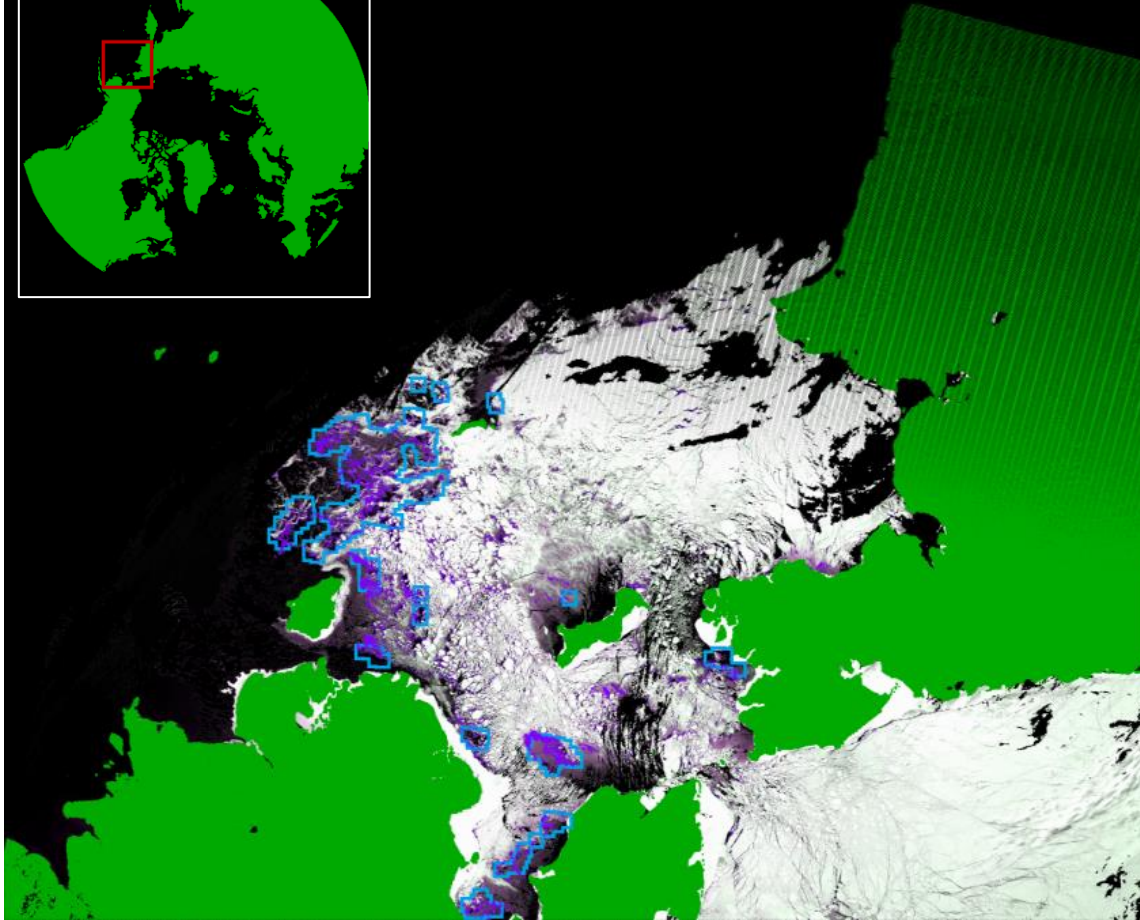
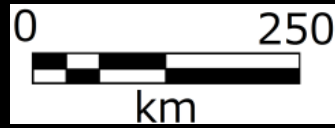
`Right answer rate' from 2013 to 2016 in Bering Sea

Bering TSI



`Right answer rate' became more than 80% in 469 out of 569 scenes

04/08/14 23:35

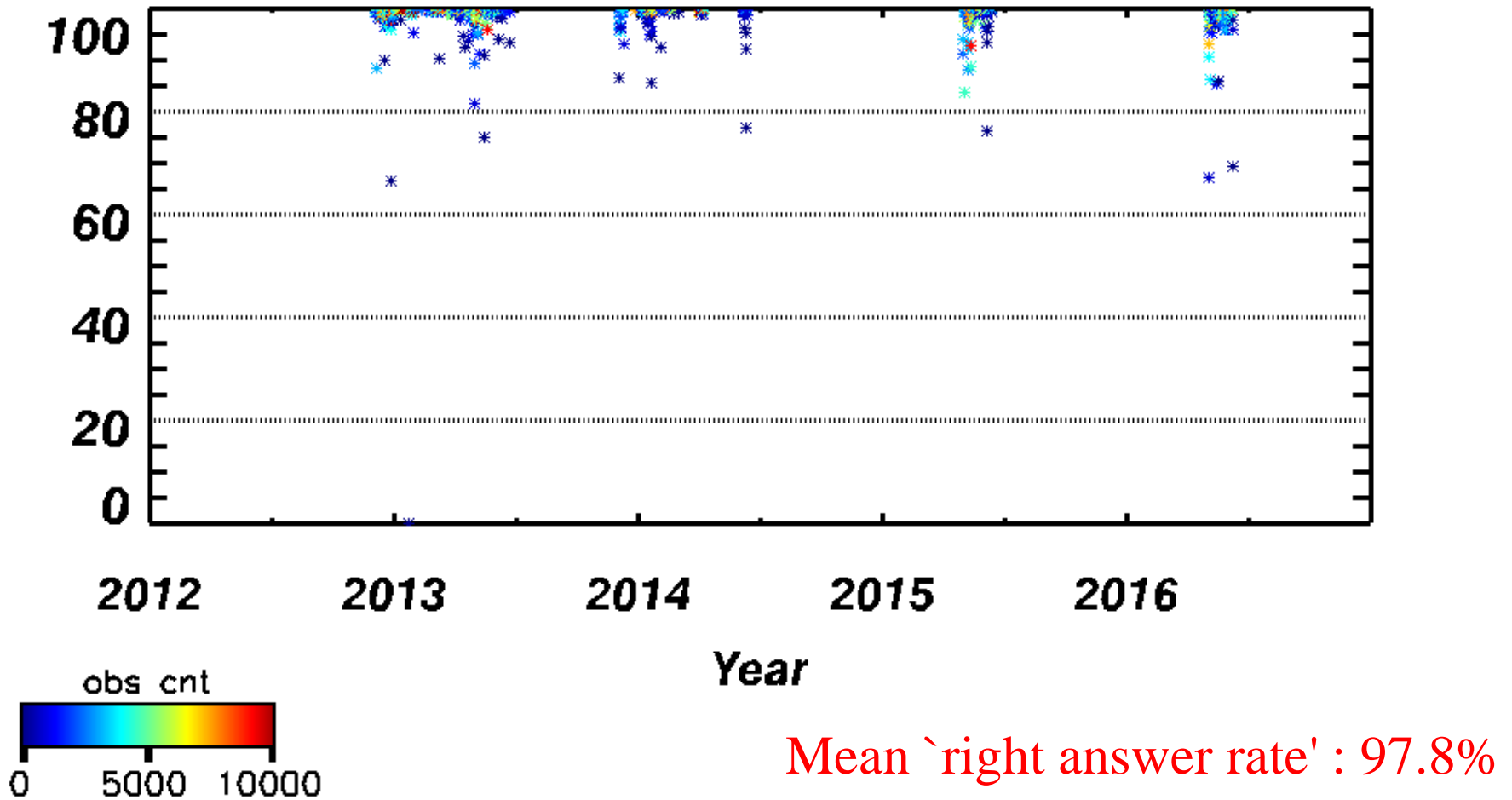


- Purple pixels : Thin Sea Ice by MODIS
- White pixels : Thick Sea Ice by MODIS
- Right blue frame : Thin Sea Ice by AMSR2
- Black pixels : Open water, cloudy area
- Green pixels : Land

'Right answer rate' 92.7%

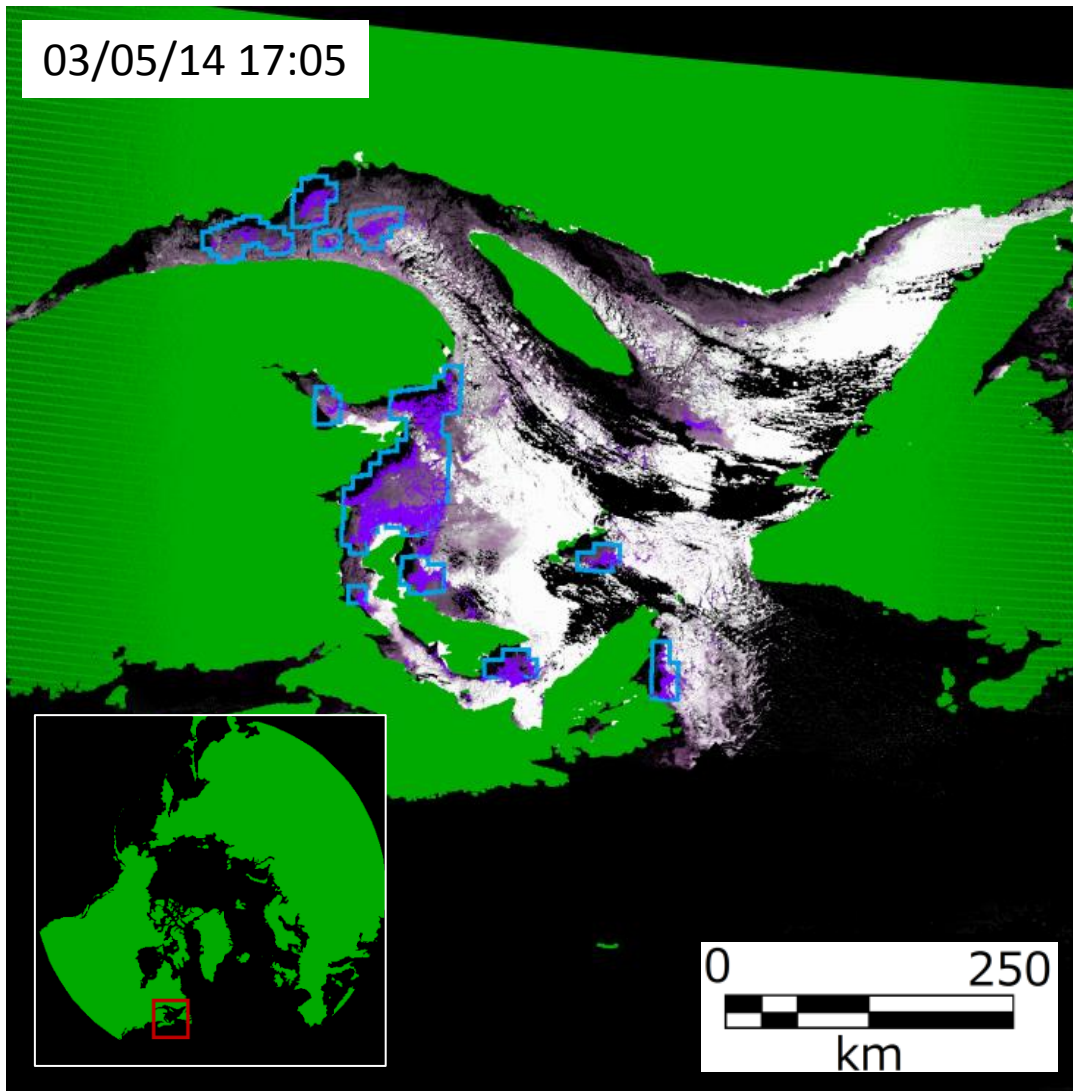
`Right answer rate' from 2013 to 2016 in Hudson Bay

Hudson TSI



`Right answer rate' became more than 80% in 424 out of 434 scenes

03/05/14 17:05



- Purple pixels : Thin Sea Ice by MODIS
- White pixels : Thick Sea Ice by MODIS
- Right blue frame : Thin Sea Ice by AMSR2
- Black pixels : Open water, cloudy area
- Green pixels : Land

'Right answer rate' 93.7%